

asecos®

FX
LINE

BEDIENUNGSANLEITUNG

Umluftfilterschränke EN 14470-1

USER MANUAL

Recirculating air filter storage cabinet
EN 14470-1

GEbruIKSAANWIJZING

Brandveiligheidsopslagkasten V-LINE

MODE D'EMPLOI

Armoires de sécurité ventilées
à filtration intégrée EN 14470-1

MANUAL DE INSTRUCCIONES

Armarios con recirculación filtrante
monitorizada EN 14470-1

ISTRUZIONI PER L'USO

Armadi con filtro per il ricircolo dell'aria
EN 14470-1

INSTRUÇÕES DE SERVIÇO

Armários de recirculação de filtragem
monitorou EN 14470-1



5 JAHRE GARANTIE*

* Bei Abschluss eines **BASICPlus-Vertrages**, mit fester 5-jähriger Laufzeit, genießen Sie 5 Jahre Garantie für Ihren Sicherheitsschrank.

5 YEARS WARRANTY*

*Upon conclusion of an asecos service and maintenance agreement (**BasicPlus tariff**) with a fixed term of 5 years, you will get a warranty extension for a maximum of 5 years for your safety storage cabinet.

Weitere Informationen zu unseren Garantieleistungen finden Sie unter
www.asecos.com/service-leistungen

For detailed information about our warranties please visit
www.asecos.com/service-conditions

DE

EN

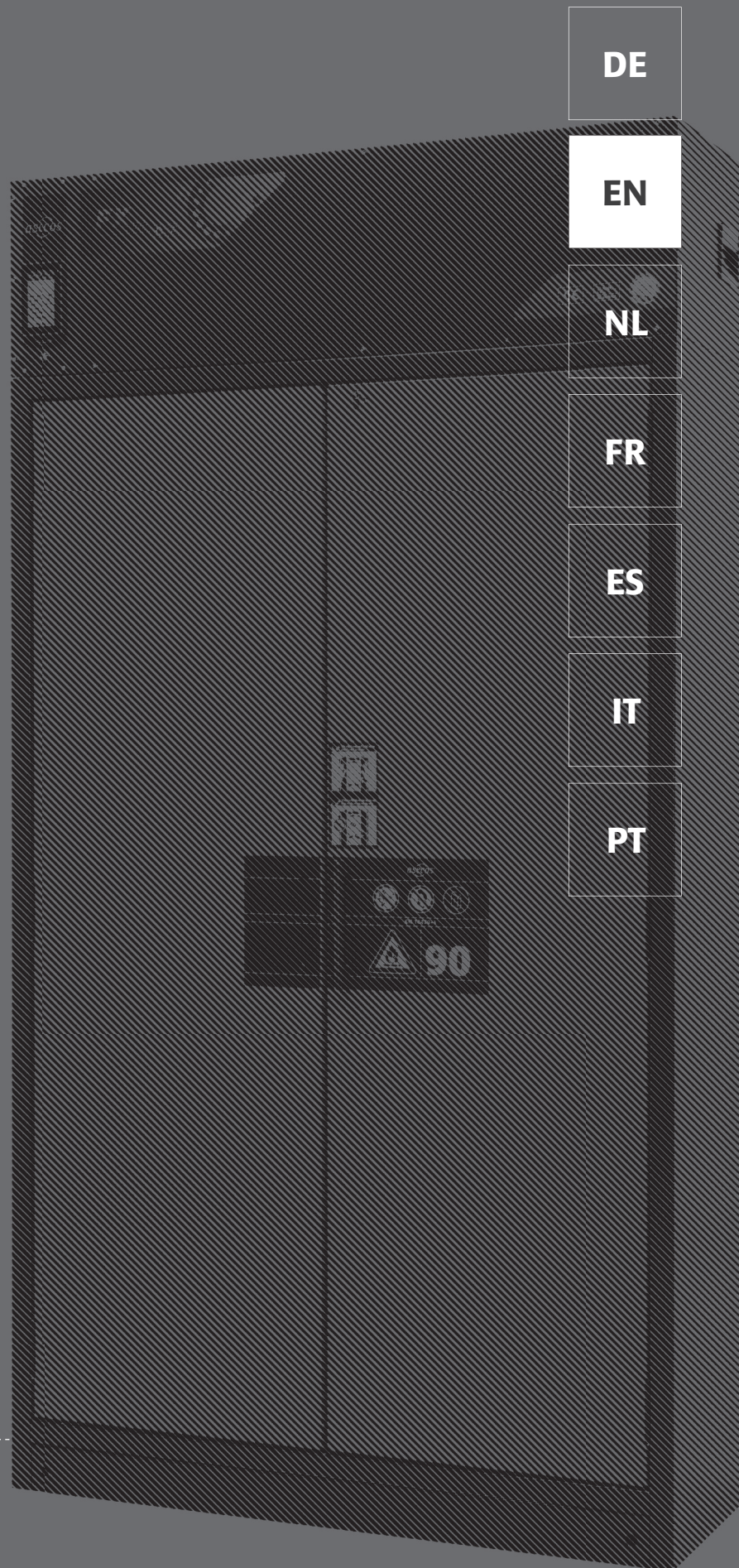
NL

FR

ES

IT

PT



FX_{LINE}

FX-PEGASUS-90



FX90.229.120.WDAC



FX90.229.090.WDAC



FX90.229.060.WDAC



FX90.229.060.WDACR

FX-CLASSIC-90



FX90.229.120.MV

FX-DISPLAY-30



FX90.229.086.WDFW



asecos GmbH
 Abt. Kundendienst
 Weiherfeldsiedlung 16-18
D-63584 Gründau
 Fax: +49 60 51 – 92 20-10

IHRE PERSÖNLICHE DOKUMENTATION ZUM asecos-SICHERHEITSSCHRANK

Sehr geehrte Kundin, sehr geehrter Kunde,

mit dem Kauf Ihres asecos-Sicherheitschranks haben Sie eine entscheidende Investition für die Sicherheit in Ihrem Haus getätigt. Vor Ihnen steht ein innovatives Produkt aus hochwertigen Materialien, das höchste Qualität garantiert.

Sicherheitschränke aus dem Hause asecos verfügen über eine lückenlose Zulassungs-Dokumentation. Wir archivieren Ihre Zulassungsdokumente jedes einzelnen Schrankes für Sie, bis Sie diese im Bedarfsfall (z. B. einer Betriebsbegehung o. ä.) mit diesem Formular von uns anfordern.

Dazu einfach dieses Formular heraustrennen/kopieren und mit Ihrer Adresse und der Seriennummer des Schrankes versehen per Fax zurück an uns.

Mit freundlichen Grüßen

asecos GmbH

YOUR PERSONAL DOCUMENTATION TO THE asecos SAFETY CABINET

Dear Customer,

you have made a decisive investment in safety for your company by purchasing this asecos safety storage cabinet. You now own an innovative product made of top-quality materials guaranteeing the highest quality standards.

asecos safety storage cabinets have complete authorisation documents. We archive the authorisation documents for every individual cabinet, keeping them ready for you should you ever need them (e.g. for a works inspection or similar). Simply request them using this form.

Tear off or copy that page and return to us by fax with your address and serial number of the cabinet on it.

Yours sincerely

asecos GmbH

Firma • company	
Abteilung • department	
Name • name	
Straße • street	
PLZ • postal code	
Ort • city	
Schrank • cabinet Seriennummer(n) • serial number(s)	



DE

EN

NL

FR

ES

IT

PT

1

OPERATING INSTRUCTIONS

Dear customer,

Thank you very much for purchasing a safety storage cabinet from our company, with which you have made a decisive investment in the safety within your company. Our safety storage cabinets make the storage of hazardous materials at the workplace safe and convenient for you.

Please read these operating instructions very carefully. Get to know the advantages and simple operability of our safety storage cabinets in detail. This simplifies the daily handling of hazardous materials for you.

Many thanks.
Your asecos team

CONTENT

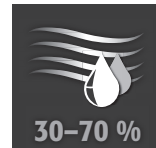
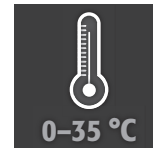
1. NOTES • GUIDELINES • GUARANTEE	5
1.1. General safety notes	5
1.2. Guarantee	5
1.3. Cabinet Details	5
2. FIRE • DISPOSAL	6
2.1. Opening The Cabinet After The Fire	6
2.2. Disposal	6
3. SAFETY CHECKS	6
4. TRANSPORT	7
4.1. Tilting the cabinet	7
4.2. Dismantling of the transport packaging	7
4.3. In-plant transport	8
4.4. Titling onto the side wall	8
5. ERECTION OF THE CABINET	9
5.1. Alignment Of The Cabinets	9
5.2. Base reinforcement (FX90)	10
5.3. Anti-tilt device (FX30)	10
6. ERECTION OF THE RECIRCULATING AIR FILTER MODULE	10
6.1. Installation	10
6.2. Fall protection of the recirculating air filter Module	11
7. POTENTIAL-FREE ALARM CONTACT	11
8. COMMISSIONING	12
8.1. Ventilation check	12
8.2. Home Display and main menu	12
8.3. Change of time and date	12
8.4. Change of system language	13
8.5. Change of system settings	13
8.6. Change of volumetric flows	13
8.7. Change of advisory alarm	13
9. FILTER CHECK AND FILTER CHANGE	14
9.1. Filter check	14
9.2. Filter change	14
10. ADVISORY ALARMS AND ERROR	14
11. INTERIOR FITTINGS	15
11.1. bottom Collecting Sump	15
11.2. Drawers, Second Storage Level	15
11.3. Tray Shelves (Height-Adjustable)	15
11.4. Shelves (height-adjustable)	16
12. STORAGE	16
13. CLOSING MECHANISMS	16
13.1. Types Of Closing	16
13.2. Locking	16
13.3. Automatic door closing system: TSA	17
1. TECHNICAL DATA	18

1. NOTES - GUIDELINES - GUARANTEE

1.1. GENERAL SAFETY NOTES

- Observe applicable statutes and regulations, and the notes in these operating instructions, when handling hazardous materials
- Work on the electrical system is to be carried out only with the power turned off and only by qualified electricians – refer here to the regulations of the local electricity supply company.
- The on-site installation conditions are to be observed (e.g. bolting the cabinets to the building).
- The instructions of the supervisory engineering department must be followed.
- Observe accident prevention regulations and workplace ordinance
- Ensure that the necessary safety checks are only carried out by authorised staff using original spare parts
- Only use the cabinet after having been properly instructed; access is to be forbidden to unauthorised persons.
- The pivoting area of the doors is to be kept free at all times; doors/drawers are to be kept closed
- By assigning trained/authorised technical personnel you can prevent the malfunctions, damage and corrosion damage that result from inappropriate transport.
- Observe the upper limits for stored quantities, loading etc.
- Containers with a volume larger than that of the bottom collecting sump may not be placed inside the cabinet; spilled hazardous materials are to be collected immediately and removed
- Vessels containing aggressive chemicals (acids/alkalis) are to be kept in special cabinets for acids and alkalis or on shelves for acids and alkalis as well as in cabinets with metal-free interior equipment.
- Before storing such materials, check that the cabinet's surface is resistant to the chemicals.
- Before the initial commissioning, the safety storage cabinet is to be examined by the user for possible damage.

Set-up requirements



1.2. GUARANTEE

The guarantee for this product is agreed between you (the customer) and your dealer (the seller). As the manufacturer, asecos guarantees the products listed in the operating instructions for a period of 24 months from the date of delivery. All model safety equipment are subject to a compulsory annual inspection by specialised staff authorised by the manufacturer. Otherwise the customer's guarantee claim against the manufacturer expires.



PLEASE NOTE!

Only the original asecos accessories and spare parts are accepted! Otherwise the customer's guarantee claim against the manufacturer expires and asecos assumes no liability for potential damage!

1.3. CABINET DETAILS

A complete overview of the models can be found at the start of the operating instructions.

Development: asecos GmbH Sicherheit und Umweltschutz, D-63584 Gründau.

Cabinet data: Logbook (included with the cabinet)

Technical drawing: Appendix 1

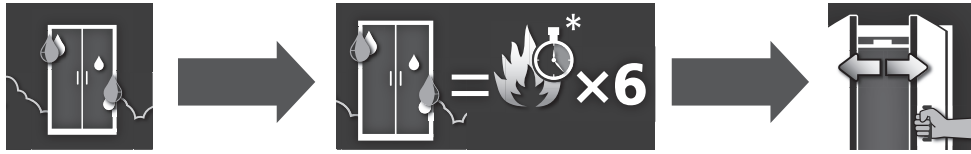
Technical data: Table in Appendix 2

FX-LINE

These models are tested, certified and marked according to requirements of BS EN 14470-1. They are intended for the storage of flammable liquids and further hazardous substances in work rooms in accordance with the valid national regulations.

2. FIRE - DISPOSAL

2.1. OPENING THE CABINET AFTER THE FIRE



CAUTION:

Depending upon the duration of the fire an ignitable vapour/air mixture may have formed; therefore remove all sources of ignition within a 10 metre radius of the cabinet before opening it.

- use only spark-free tools
- open the cabinets with extreme caution

2.2. DISPOSAL



The models can be disposed of once they have been dismantled and the materials sorted.

3. SAFETY CHECKS

As safety equipment the cabinets have to be checked for safety at least once per year. The next checking date can be taken from the check sticker on the outside of the door. This annual check can be carried out with the necessary care, and for securing your warranty claims in the case of fire, only by an authorised asecos employee (refer also to our service brochure regarding this).

In addition, we recommend that you carry out a daily and monthly functional check:

Daily functional check

- applies to the spill containment sumps (collect and remove any leakages)

Monthly functional check

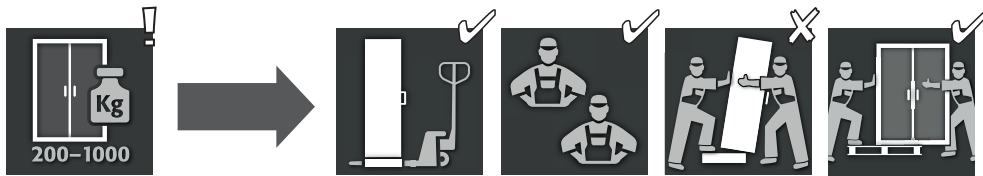
- perfect function of the doors: - hinges - locking system - door closer - door open arrest system
 - correct seating and condition of the fire protection seals
- In case of damage please contact your dealer in order to have the cabinet repaired using original spare parts. The cabinets can be cleaned with a mild household cleaner and a soft cloth.



CONTACT:

In the case of defects or complaints about our products (within and also after the warranty period), and for requesting safety checks or taking out a service contract, please contact our service hotline on: Tel: +44 1785 22 70-90 info@asecos.co.uk

4. TRANSPORT



CAUTION:

Transport the cabinet in an upright position on a pallet truck, tied and secured against slipping, until the final place of installation is reached. The transport locks in the door joints may only be removed directly at the place of installation! Inappropriate transport can lead to concealed damage to the fire protection insulation! We can only guarantee the necessary quality if the cabinet is transported to the place of its use by our specially trained staff.



ATTENTION

FX-LINE type 90, width 600 mm: The clearance drive-in width of the base is 520 mm.

FX-LINE type 30, width 560 mm: The clearance drive-in width of the base is 406 mm.

You must observe this when selecting a pallet truck! Appliances with a carrying width larger than the drive-in width may not be used.

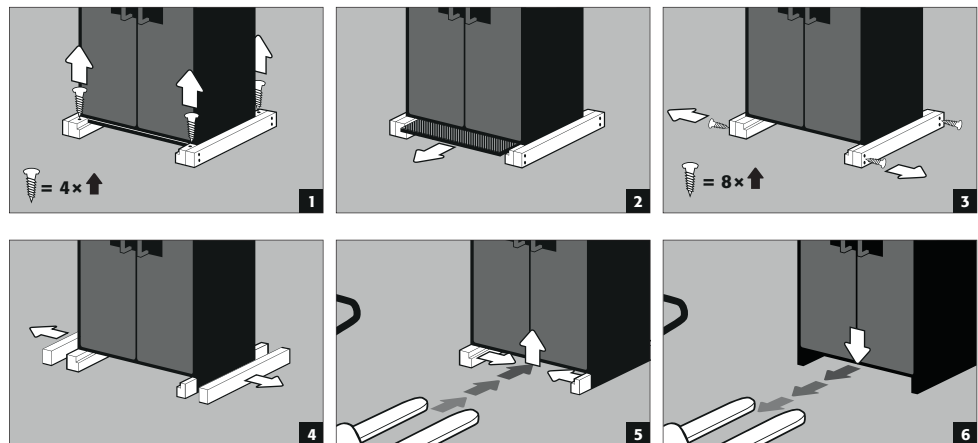
4.1. TILTING THE CABINET



CAUTION:

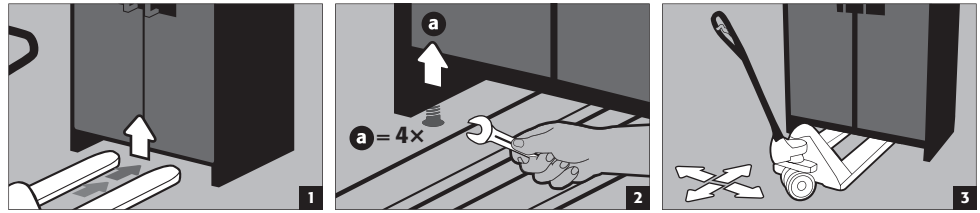
Tilting the cabinet may only be done without jolts!

4.2. DISMANTLING OF THE TRANSPORT PACKAGING



4.3. IN-PLANT TRANSPORT

- In-plant transport is also possible without transport locks (inserted as standard in the door joints)

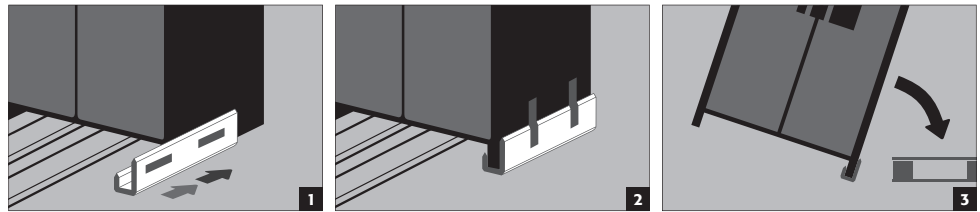


CAUTION:

Before moving the cabinet, the recirculating air filter module must be taken off the cabinet.

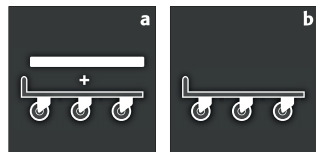
4.4. TITLING ONTO THE SIDE WALL

- Titling onto the side wall is only possible with the optionally available tilting bracket (order no. HFV.27665).

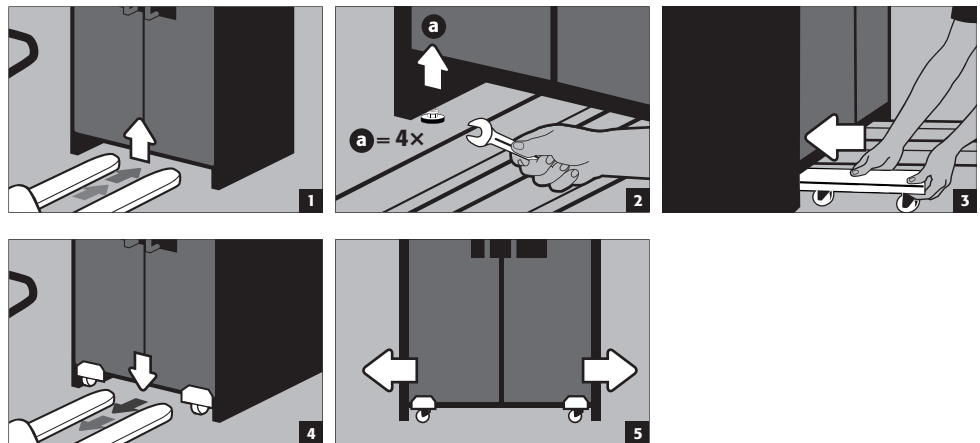


Q-Mover

Order no. HFI.23526, available from your authorised dealer



a: upright transport
b: upright transport through standard doors (headroom 1986 ± 2mm)



CAUTION:

Written notification of any damage to the cabinet must be given immediately!

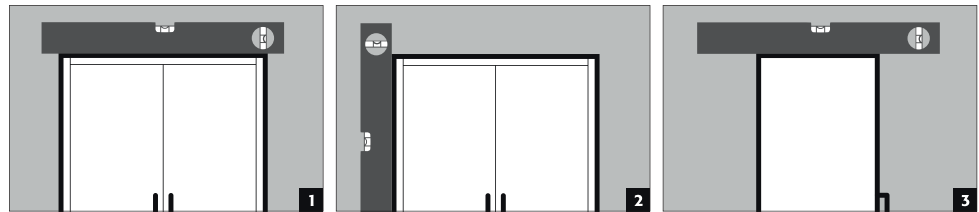
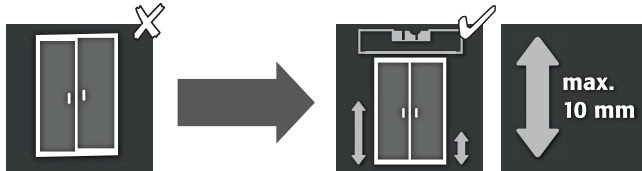
5. ERECTION OF THE CABINET

5.1. ALIGNMENT OF THE CABINETS

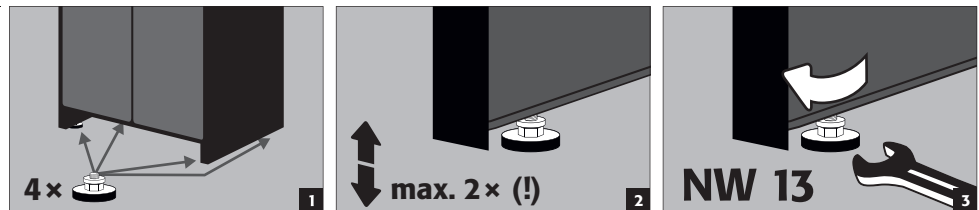


CAUTION:

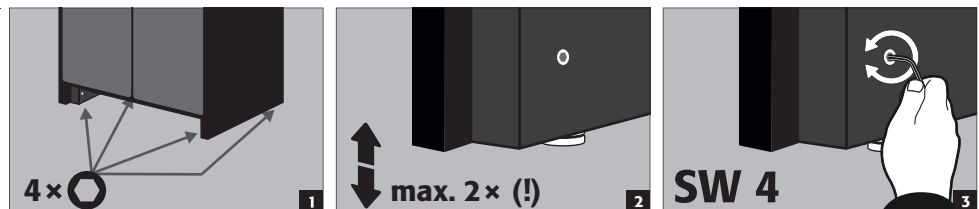
Door elements must not scrape against the fire prevention seals in the fold of the door when opening and closing! Doors with an automatic closing mechanism must close automatically from every position and the lock must be able to lock! The cabinet body must be aligned before installing the recirculating air filter module!



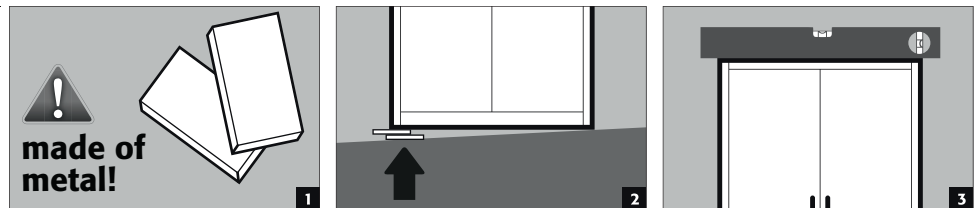
**FX-CLASSIC-90
FX-PEGASUS-90**



**FX-DISPLAY-30
with adjusting aids in plinth**



**FX-DISPLAY-30
without adjusting aids**

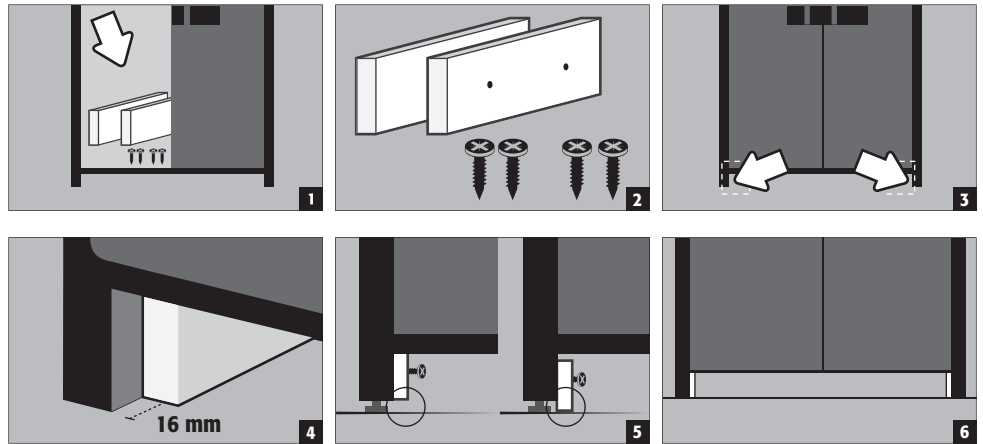


5.2. BASE REINFORCEMENT (FX90)

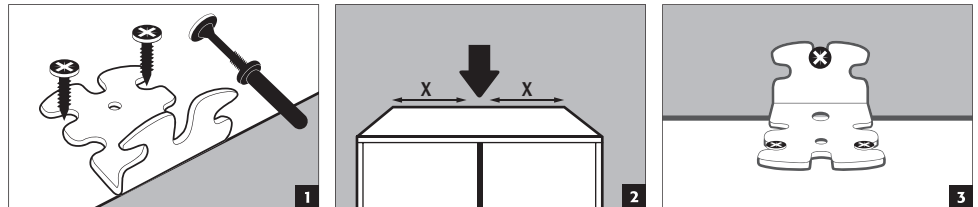


CAUTION:

Base reinforcement is mandatory after the cabinet has been adjusted!



5.3. ANTI-TILT DEVICE (FX30)



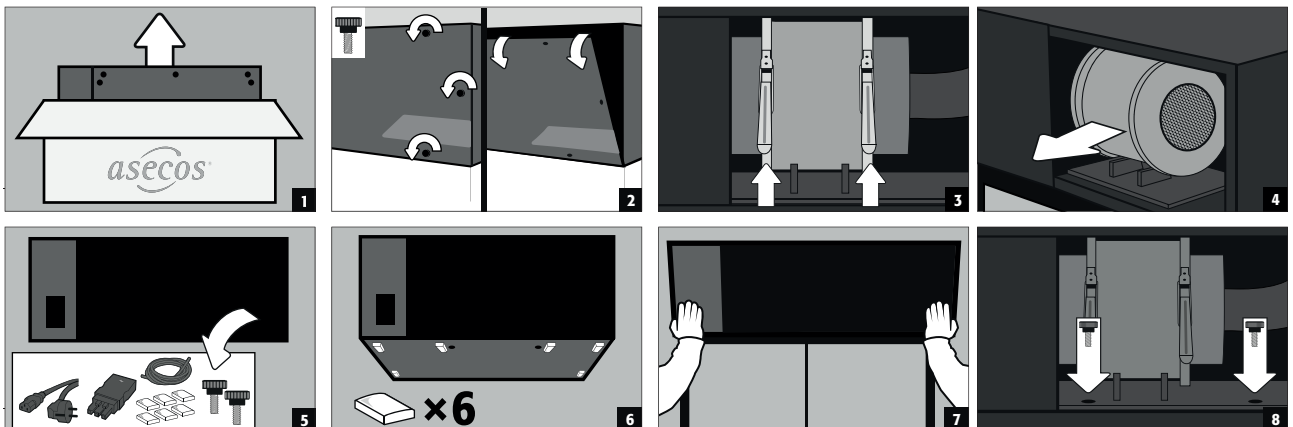
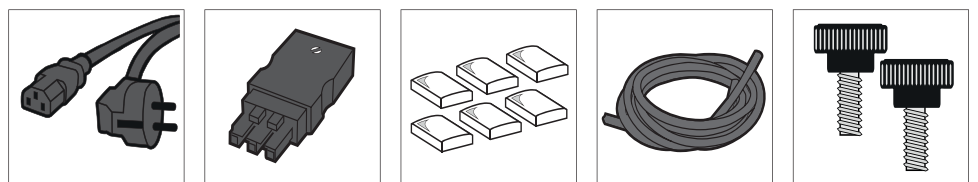
6. ERECTION OF THE RECIRCULATING AIR FILTER MODULE

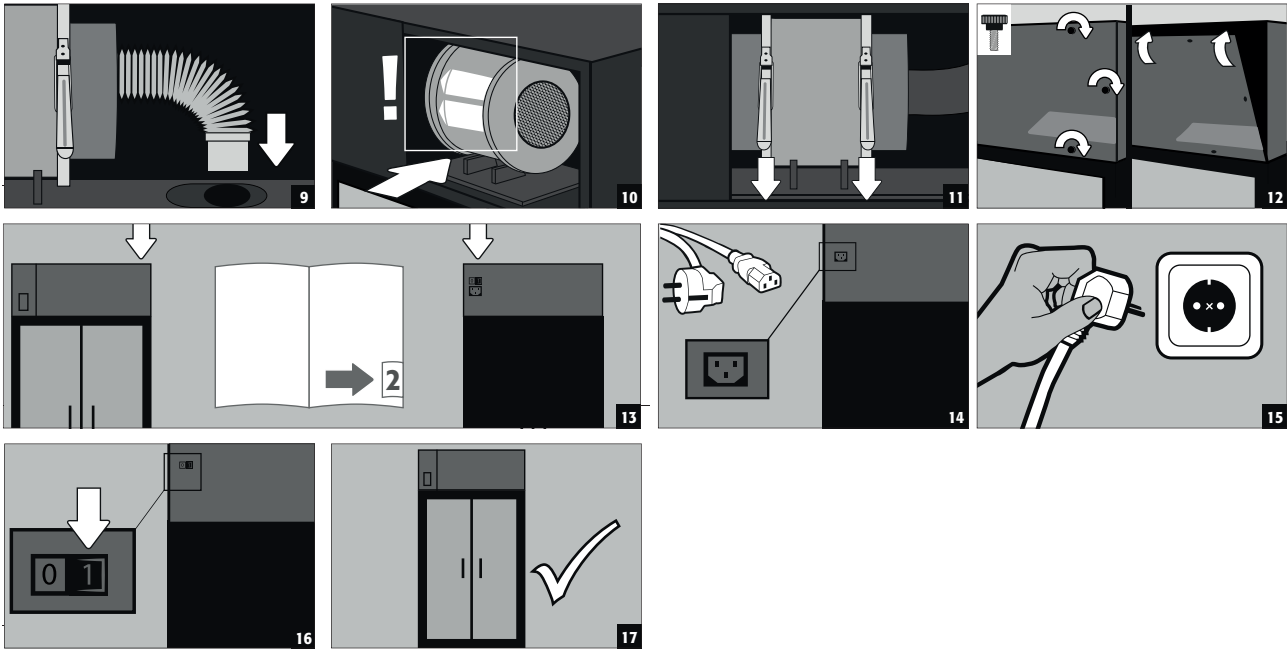
6.1. INSTALLATION



CAUTION:

The cabinet body must be aligned before installing the recirculating air filter module! Place only in pairs the recirculating air filter module on the cabinet body!



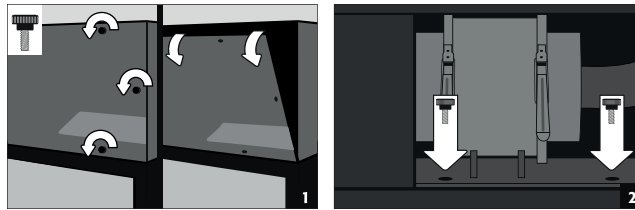


6.2. FALL PROTECTION OF THE RECIRCULATING AIR FILTER MODULE



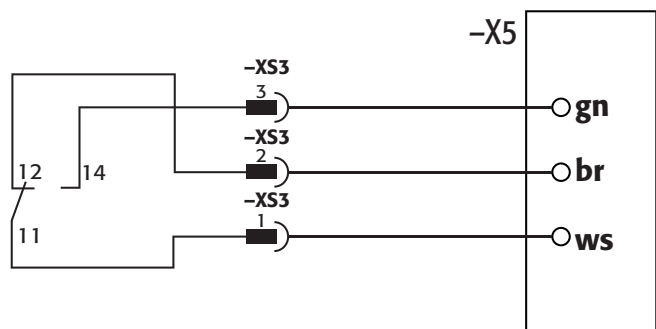
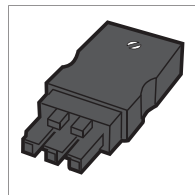
CAUTION:

Fixing the ventilation filter module on the upper part of the cabinet is absolutely necessary for all modules! Screwing down should be finger tight. Use the screws supplied for this



7. POTENTIAL-FREE ALARM CONTACT

The three pole connector which is also supplied must be used in order to use the voltage free alarm contact. Only clamps XS3(2) and XS3(1) are normally connected to the connector! Internally a contact will be switched (opened), as soon as the ventilation filter cabinet has reached the prescribed volume flow. If there is a ventilation breakdown or a filter saturation it can therefore be signalled. Furthermore, it will signal if the ventilation filter has been cut of from the mains power.



CAUTION:

Max. Nominal voltage AC: 250 V
Max. permanent current at 250 V AC: 6 A

8. COMMISSIONING

- Before putting into operation for the first time, the user must carry out an examination of the safety storage cabinet for possible damage, such as defective or loose sealing elements, correct alignment and perfect functioning of the door elements.
Use the cabinet and accessories only if they are in an orderly condition.

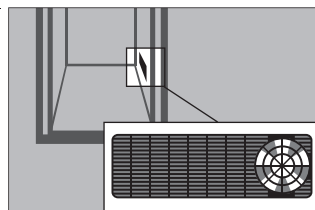
8.1. VENTILATION CHECK

- Using the wool thread test the effectiveness of the ventilation and/or the correct connection of the ventilator support to the cabinet supports!



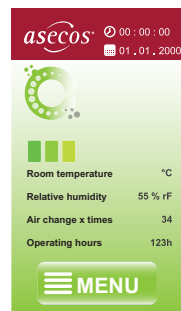
Ventilation wheel for technical ventilation

FX-CLASSIC-90
FX-PEGASUS-90



- The ventilation wheel serves as an indicator for correct ventilation.
- If the wheel turns, the necessary 10-fold air recirculation rate is exceeded.

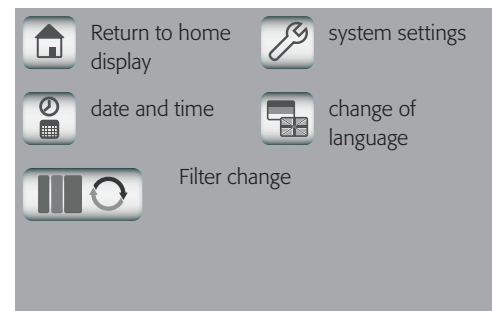
8.2. HOME DISPLAY AND MAIN MENU



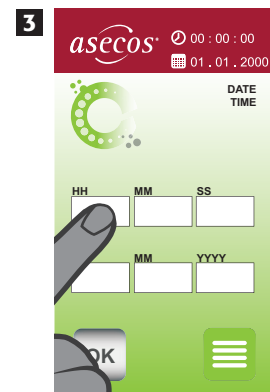
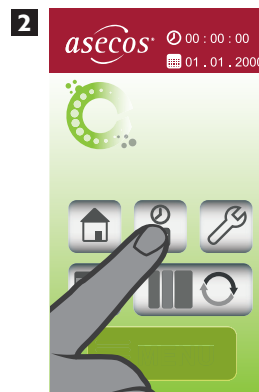
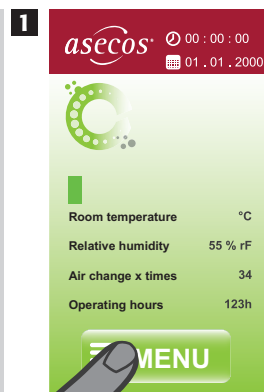
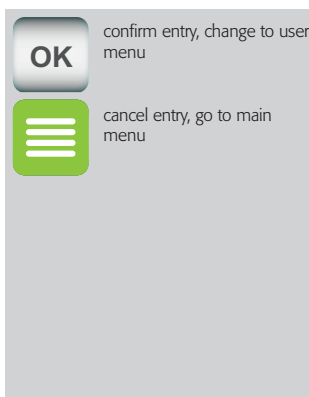
home



main menu



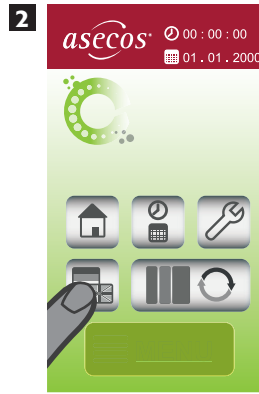
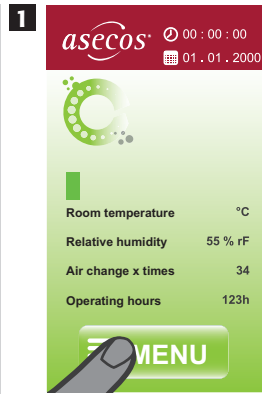
8.3. CHANGE OF TIME AND DATE



8.4. CHANGE OF SYSTEM LANGUAGE

OK confirm entry, change to user menu

☰ cancel entry, go to main menu



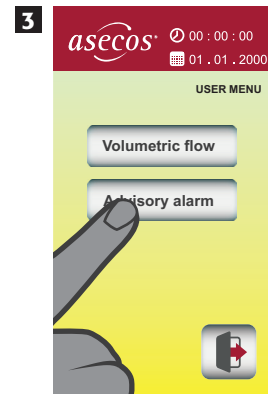
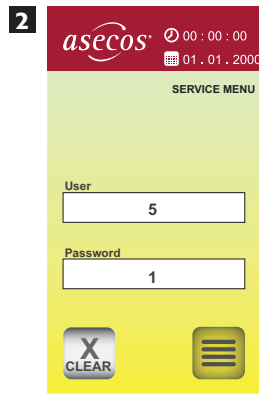
8.5. CHANGE OF SYSTEM SETTINGS

user5 / password=1
These values are preset and can only be changed by an asecos service technician.

X CLEAR clear the filled out user and password values

☰ cancel entry, go to main menu

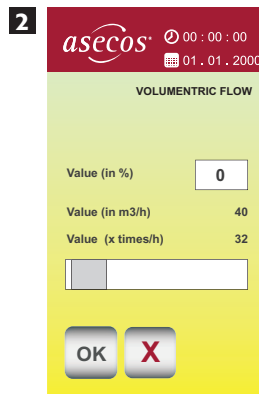
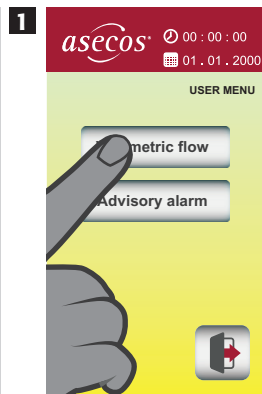
↩ return to service menu



8.6. CHANGE OF VOLUMENTRIC FLOWS

OK confirm entry, change to user menu

X cancel entry, go to main menu

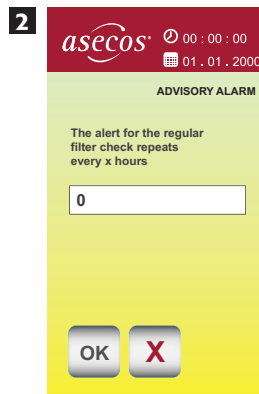
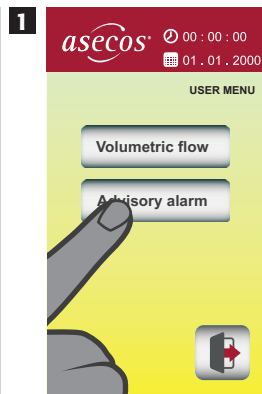


- Volume flows can be adjusted via the slide control or the key pad within a preset range.
- The set range depends on the model size

8.7. CHANGE OF ADVISORY ALARM

OK confirm entry, change to user menu

X cancel entry, go to main menu



- A minimum of 24 and a maximum of 672 hours can be set.

9. FILTER CHECK AND FILTER CHANGE



CAUTION:

The filter saturation by inorganic hazardous materials must be checked manually at regular intervals.

- Under the touch displays, all ventilation filter cabinets have a device for manually inspecting the filter saturation.
- The FX-Line has in addition a gas detector for the permanent monitoring of the filter saturation by hydrocarbons according to the positive material list.
- On the factory site, there is an indicator alarm for the manual filter check every 336 hours (this can be moved in the framework of the risk assessment, see for this Point 7.7)
- In the delivery scope, there is a 1m long hose line suitable for commercially available inspection tubes (for instance, Dräger) including an adaptor suitable for the withdrawal equipment.

9.1. FILTER CHECK

- Please connect the hose included. Adaptor with withdrawal equipment and an empty or used inspection tube included. Gas detection pump.
- In order to remove the dead volume of the hose, first of all a hub with an empty or an already used inspection tube is implemented.
- Immediately afterwards use the correct inspection tube and implement the test according to the instructions of the testing equipment manufacturer.
- If the measurement results approach the limit value according to your risk assessment, a filter change should be initiated, at latest however when the WEL (Workplace Exposure Limit according to the Technical Rule for Hazardous Materials TRGS900 or the Safety Data sheet of the Medium)

9.2. FILTER CHANGE

Each filter of the ventilation cabinets is matched according to the size and characteristics of the cabinet model and the intended passive storage therein (according to positive material list). The filter must be changed after a more substantial leakage and at latest after **8640 operational hours (12 months)**.



1

2

3

Follow the instructions on the display!

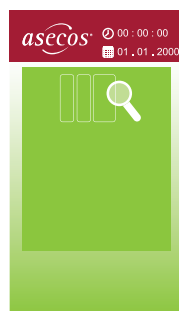
4



PLEASE NOTE!

Only the original asecos accessories and spare parts are accepted! Otherwise the customer's guarantee claim against the manufacturer expires and asecos assumes no liability for potential damage!

10. ADVISORY ALARMS AND ERROR



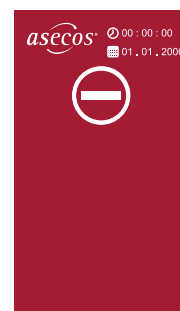
Advisory alarm FILTER CHECK (green)

- Undertake a filter check using inspection tubes
- Follow **Point 8.1** on this



Advisory alarm FILTER CHANGE (Orange)

- It warns of the upcoming filter exchange.
- It will be rhythmically repeated until the filter is exchanged (**Point 8.2**)



Error DIVERSE (red)

- Contact must be made with Service on severe breakdown in operation
- The OK button causes further prompts, the system makes itself inactive

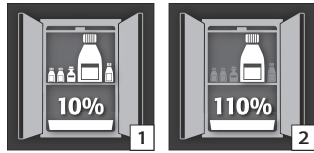
11. INTERIOR FITTINGS



CAUTION:

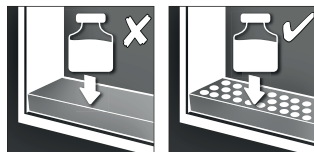
Loose parts (e.g. insertable sumps) must always be fully installed/inserted in order to ensure secure closing of the cabinet doors in case of fire.

11.1. BOTTOM COLLECTING SUMP



According to EN 14470-1: A spill containment sump must be installed below the lowest storage level. The spill containment sump must be able to hold a minimum volume of 10 % of all the containers stored in the cabinet [1] or at least 110 % of the volume of the largest single container [2], whichever of these volumes is larger.

Use as a storage surface in case of cabinets with several storage levels:

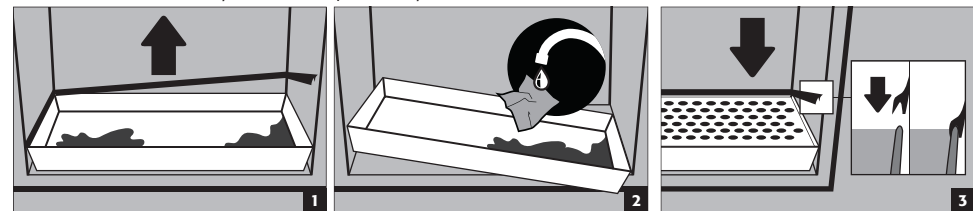


CAUTION:

Use as a storage surface is possible only in conjunction with a perforated metal plate insert.

Leaks:

- Liquid in the sump is to be collected using suitable means.
- The choice of means is your own responsibility.



11.2. DRAWERS, SECOND STORAGE LEVEL

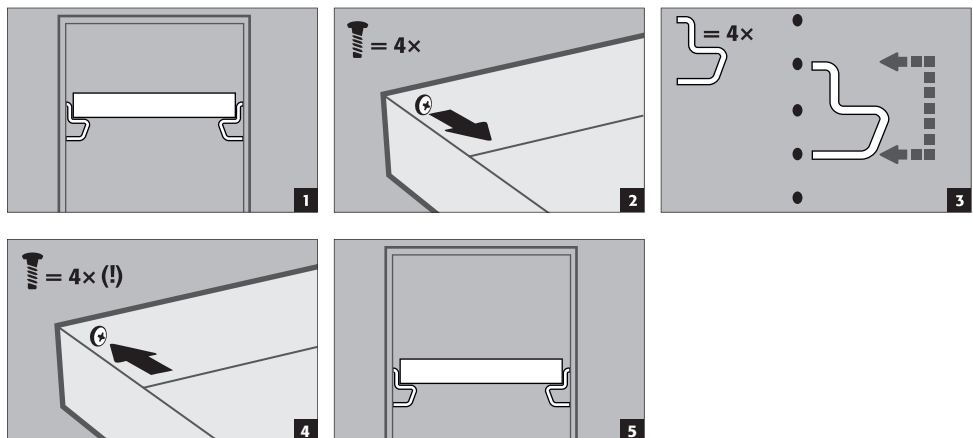
- All drawers have been designed in such a way that they are permanently drawn in the cabinet or automatically drawn into the cabinet in the case of fire, making it possible to close the cabinet doors.



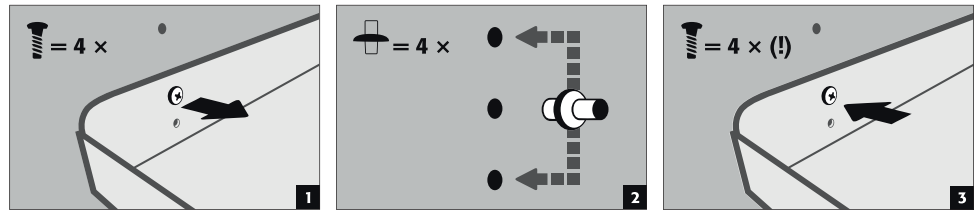
CAUTION:

The height of the drawers in safety storage cabinets may be adjusted only by authorised asecos employees, since the safe retraction of the drawers in case of fire must be guaranteed!

11.3. TRAY SHELVES (HEIGHT-ADJUSTABLE)



11.4. SHELVES (HEIGHT-ADJUSTABLE)



12. STORAGE

- Vessels containing aggressive chemicals (acids and alkalis) are to be kept in special cabinets for acids and alkalis or on shelves for acids and alkalis as well as in safety storage cabinets with metal-free interior equipment.
- The storage of corrosive liquids can affect the function of the shut-off equipment for the air supply and exhaust.
- Each container placed inside reduces the minimum containment volume in relation to the total stored quantity.





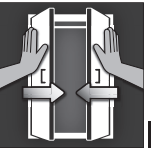


Applicable for all models: Depending on the type class of the cabinet, observe the respective valid national regulations!

13. CLOSING MECHANISMS

13.1. TYPES OF CLOSING

- 1 Thermal release:** in the case of fire the doors close automatically (even if latched)
- 2 Automatic door closing system TSA**
- 3 Doors permanently self-closing**
- 4 Doors with arrest system**
- 5 Doors closable only by hand**

					
FX-LINE					
FX-DISPLAY-30	✓				
FX-CLASSIC-90	✓				
FX-PEGASUS-90	✓	✓	✓	✓	



FX-DISPLAY-30 and FX-CLASSIC-90:



If the doors not longer latch in any position, then the fusible link of the thermal release has tripped. **The cabinet is to be returned to its delivery condition immediately in order to avoid malfunctions.**

13.2. LOCKING



CAUTION:

Applicable for all models: The owner/user must ensure that all doors and drawers are kept closed whenever the contents of the cabinet are not being accessed! In general it must be noted that the cabinets do not possess an emergency unlocking facility. This means that persons trapped inside the cabinet cannot free themselves!

CYLINDER LOCK (suitable for master key systems)	
	with locking status indicator
	
FX-LINE FX-DISPLAY-30	FX-CLASSIC-90, FX-PEGASUS-90

13.3. AUTOMATIC DOOR CLOSING SYSTEM: TSA



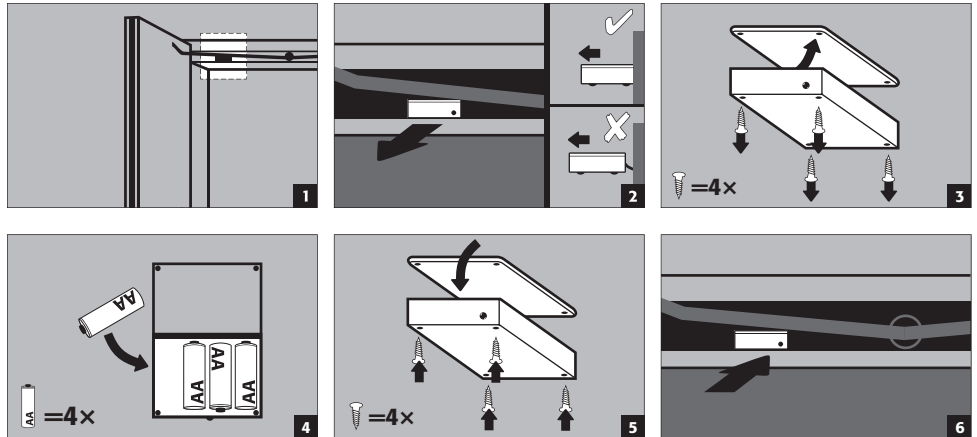
CAUTION:

The doors close automatically. The time interval until the doors close can be set individually by means of a jumper (preset: 60 seconds). Do not push the doors to close by hand, since this can lead to damage to the mechanism!

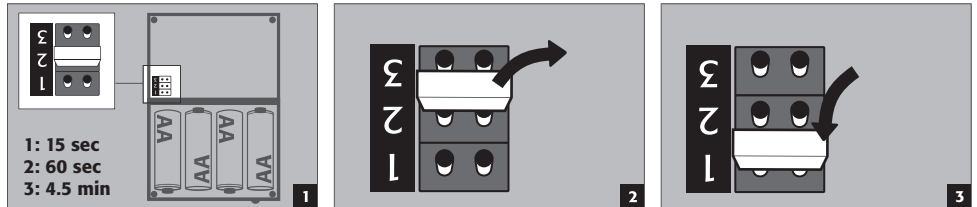
Sequence



Battery replacement



Changing the closing times with the aid of the jumper



CAUTION:

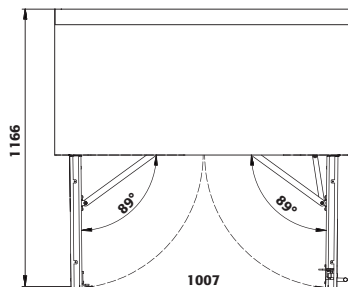
The electrical cable on the housing may not come into contact with the locking linkage of the cabinet!

1. TECHNICAL DATA

		FX90.229.120.WDAC	FX90.229.090.WDAC	FX90.229.060.WDAC	
External dimensions W x D x H	mm	1193 x 615 x 2294	893 x 615 x 2294	599 x 615 x 2294	
Internal dimensions W x D x H	mm	1050 x 522 x 1647	750 x 522 x 1647	450 x 522 x 1647	
Depth with open doors	mm	1165	1015	1128	
Fire resistance level		90 minutes	90 minutes	90 minutes	
Entry height transport base	mm	90	90	90	
Entry width transport base	mm	1120	820	526	
Weight without interior equipment	kg	459	370	287	
Maximum load	kg	600	600	600	
Distributed load	kg/m ²	546	667	915	

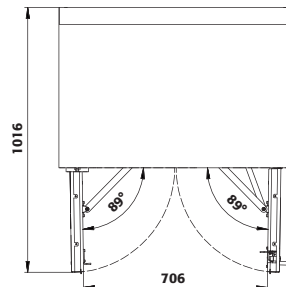
		FX90.229.120.MV	FX30.229.086.WDFW		
External dimensions W x D x H	mm	1193 x 615 x 2294	864 x 620 x 2294		
Internal dimensions W x D x H	mm	left: 450 x 522 x 1647 right: 450 x 522 x 1647	750 x 519 x 1626		
Depth with open doors	mm	1165	1394		
Fire resistance level		90 minutes	30 minutes		
Entry height transport base	mm	90	90		
Entry width transport base	mm	1120	788		
Weight without interior equipment	kg	554	245		
Maximum load	kg	600	600		
Distributed load	kg/m ²	595	608		

Top view



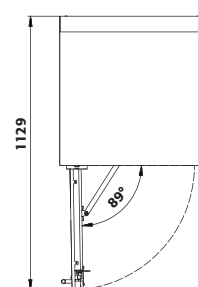
FX90.229.120.WDAC

Top view



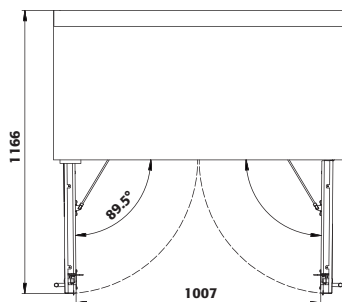
FX90.229.090.WDAC

Top view



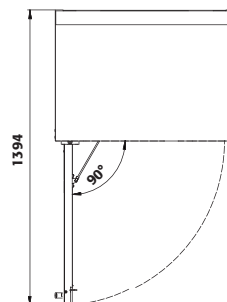
FX90.229.060.WDAC

Top view

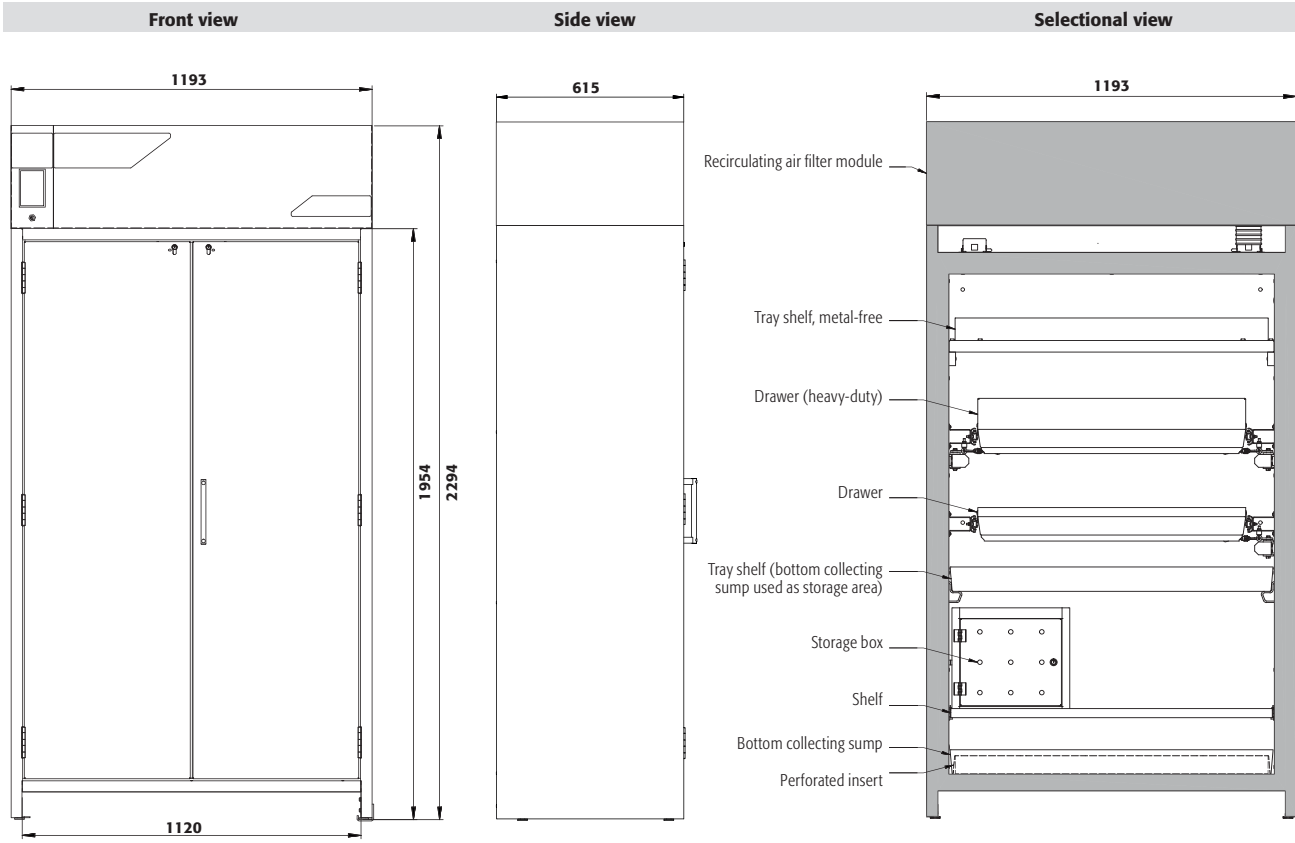


FX90.229.120.MV

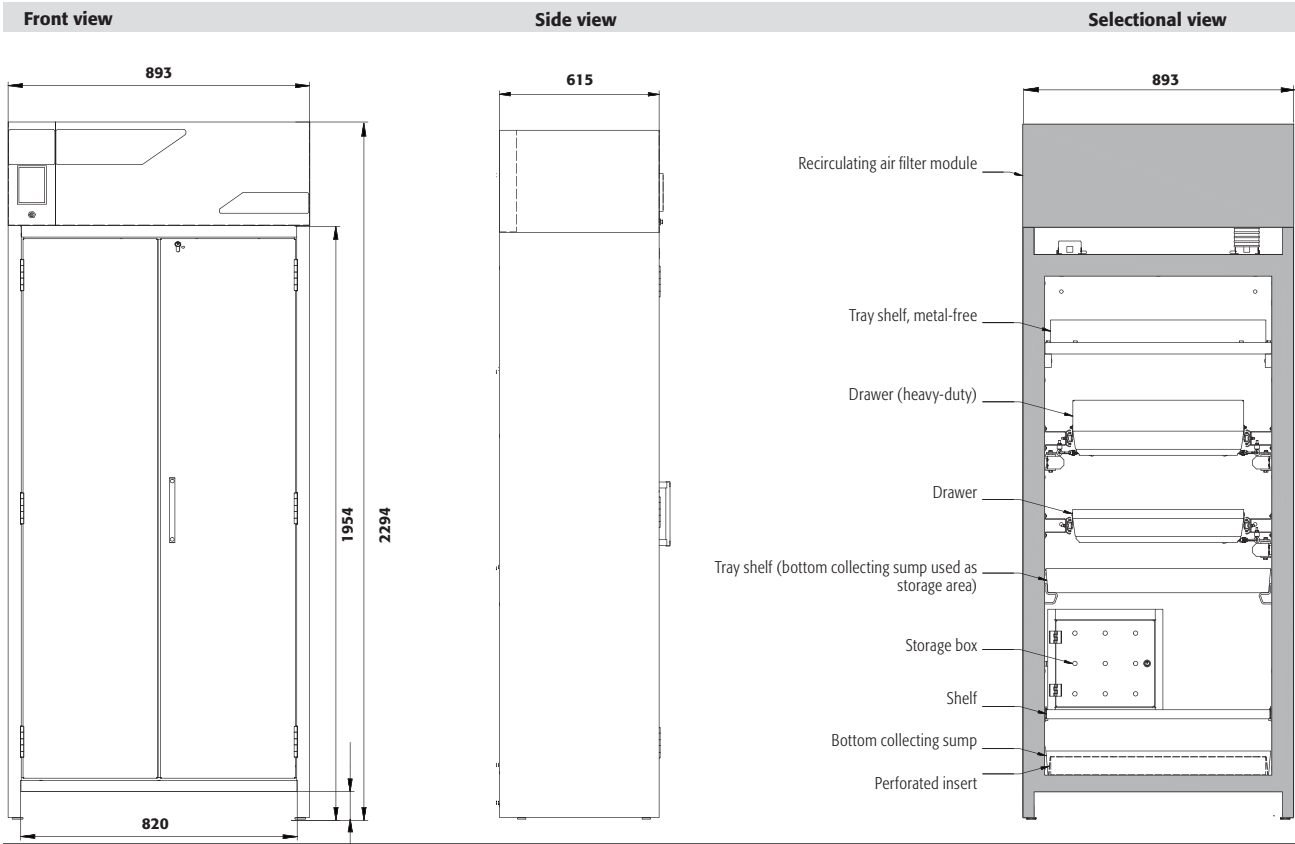
Top view



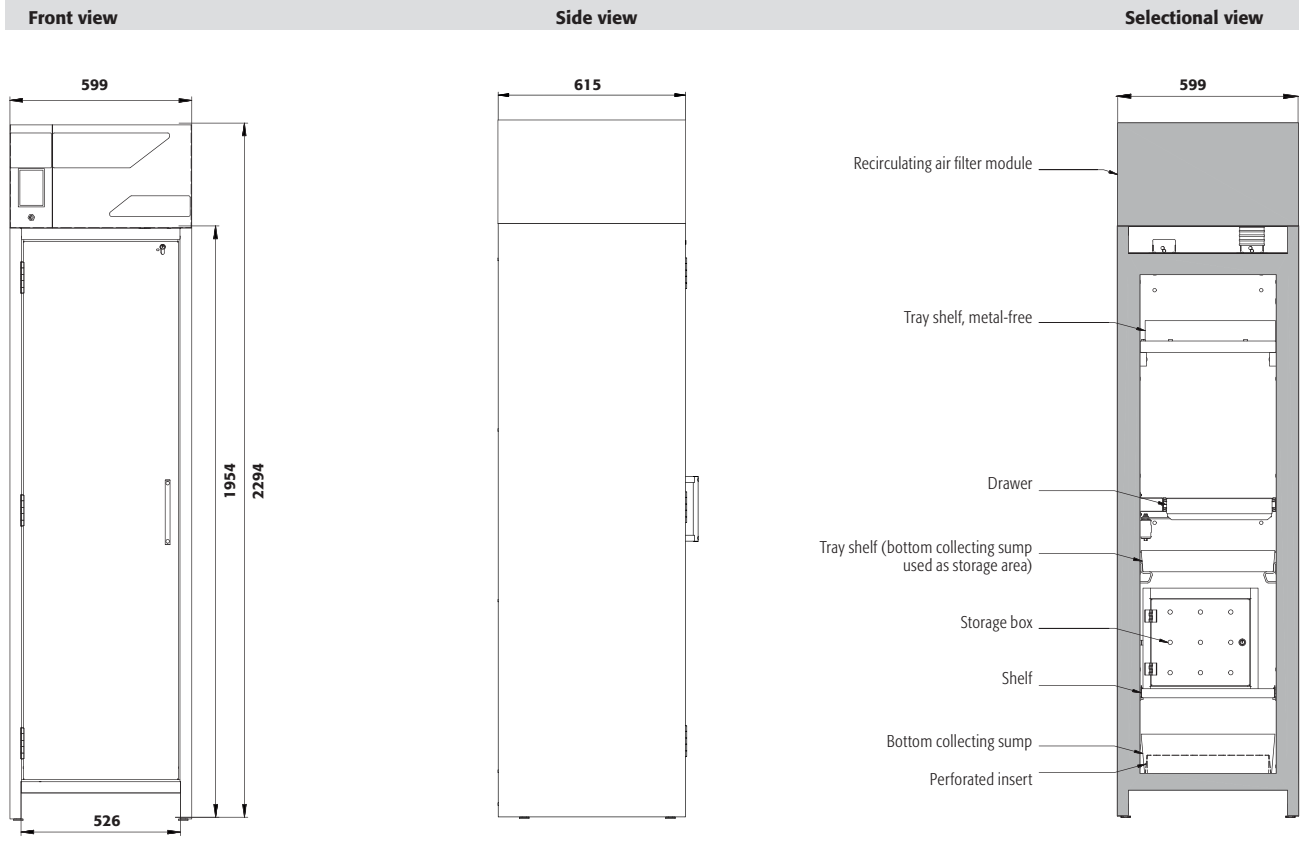
FX30.229.086.WDFW



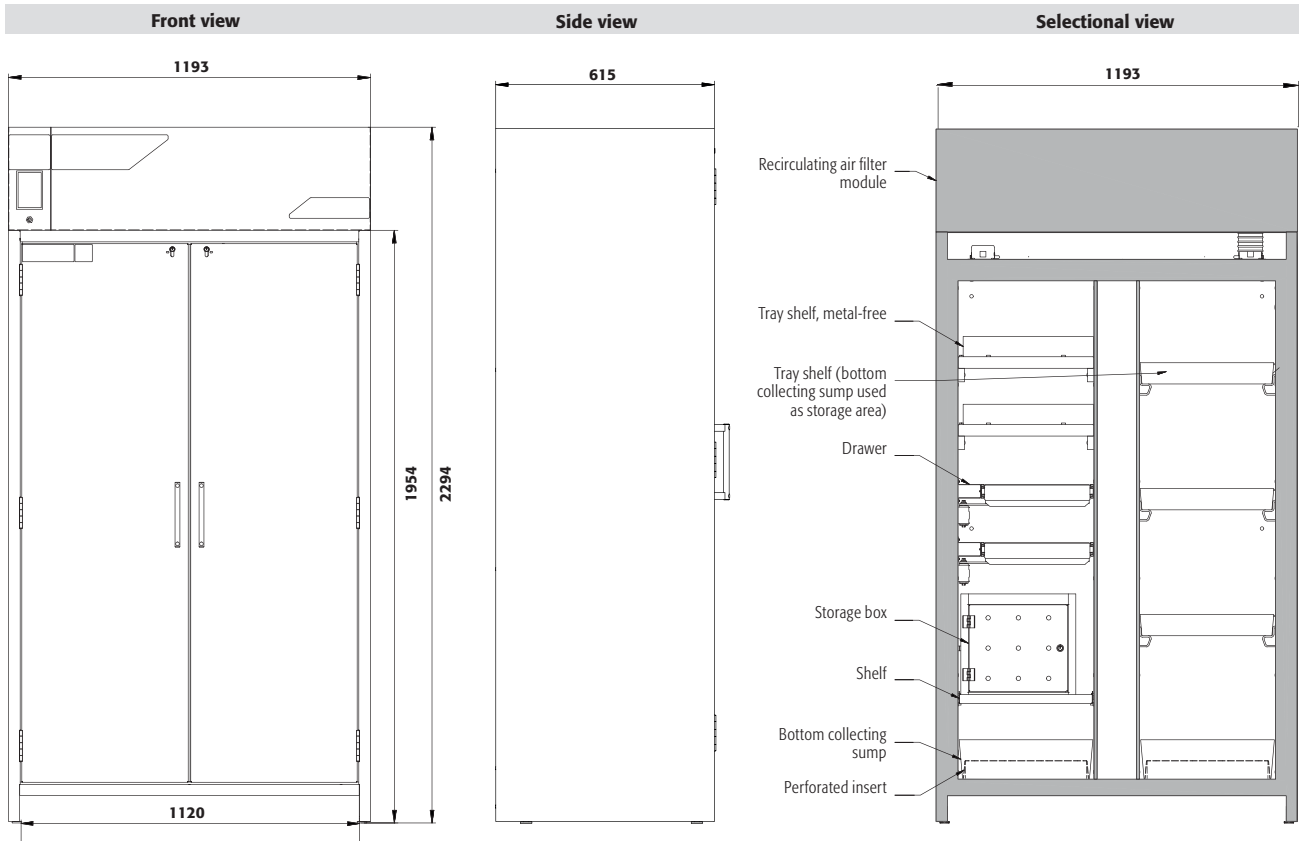
FX90.229.120.WDAC



FX90.229.090.WDAC

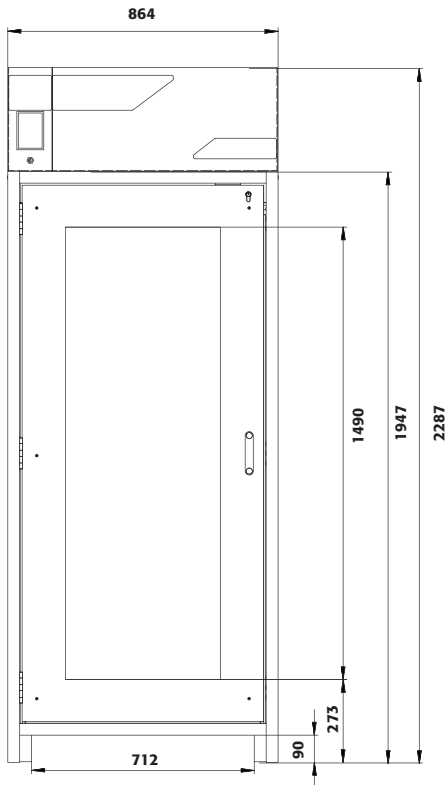


FX90.229.060.WDAC

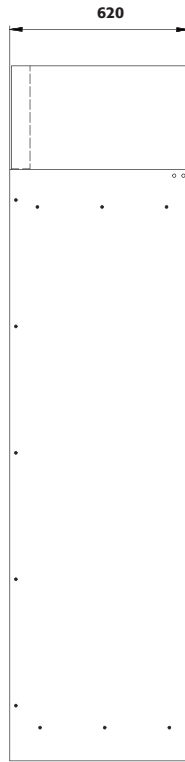


FX90.229.120.MV

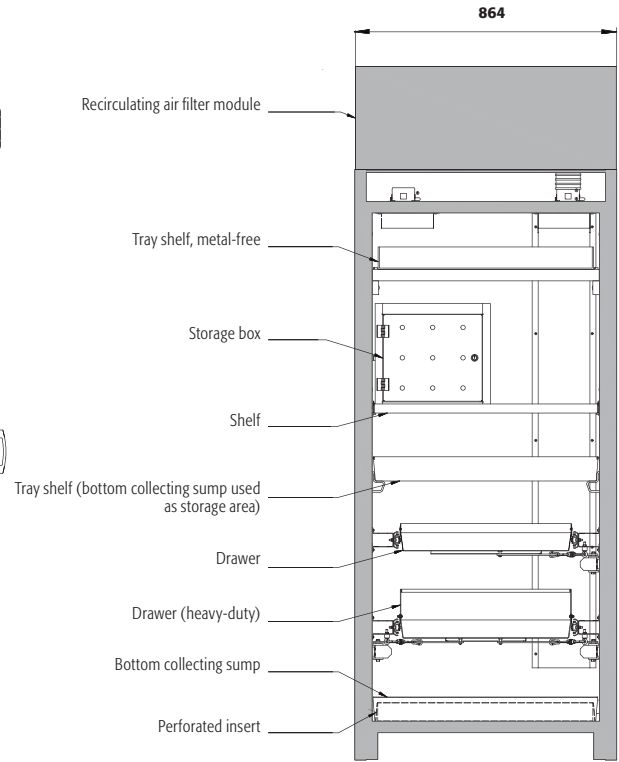
Front view



Side view



Selectional view



FX30.229.086.WDFW

asecos GmbH
Abt. Kundendienst
Weiherfeldsiedlung 16-18
D-63584 Gründau
Fax: +49 60 51 – 92 20-10

www.asecos.com

Ihr Fachhändler:

Your partner:

Uw partner:

Votre partenaire :

Su distribuidor:

su richiesta: