

EN

EP.V.34170.01 | 08/2024

asecos®



UB LINE K LINE

USER MANUAL

Safety storage under bench cabinets according to EN 14470-1

5 YEARS WARRANTY

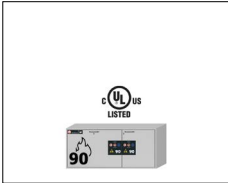
Upon conclusion of an asecos service and maintenance agreement (BasicPlus tari) with a fixed term of 5 years, you will get a warranty extension for a maximum of 5 years for your safety storage cabinet.

For detailed information about our warranties please visit:

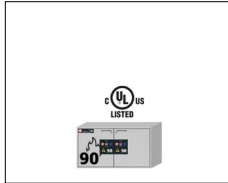




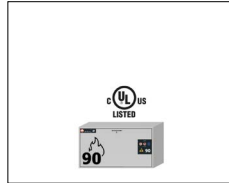
UB-S-90



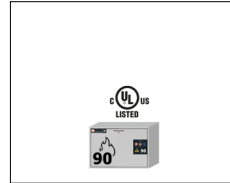
UB90.060.140.2S
 UB90.060.140.UL.2S
 UB90.060.140.050.2S
 UB90.060.140.050.UL.2S



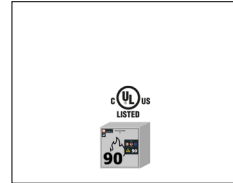
UB90.060.110.2S
 UB90.060.110.UL.2S
 UB90.060.110.050.2S
 UB90.060.110.050.UL.2S
 UB90.080.110.060.2S



UB90.060.110.S
 UB90.060.110.UL.S
 UB90.060.110.050.S
 UB90.060.110.050.UL.S

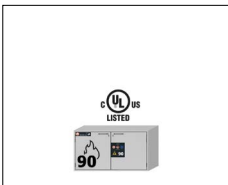


UB90.060.089.S
 UB90.060.089.UL.S
 UB90.060.089.050.S
 UB90.060.089.050.UL.S

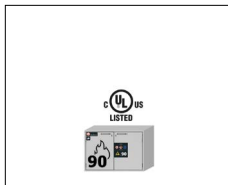


UB90.060.059.S
 UB90.060.059.UL.S
 UB90.060.059.050.S
 UB90.060.059.050.UL.S
 UB90.080.059.060.S

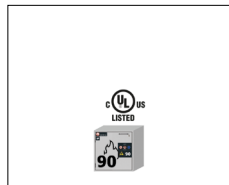
UB-T-90



UB90.060.110.2T
 UB90.060.110.UL.2T
 UB90.060.110.050.2T
 UB90.060.110.050.UL.2T
 UB90.080.110.060.2T
 UB90.080.110.075.2T

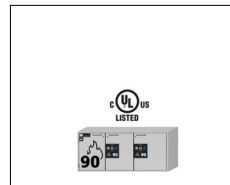


UB90.060.089.2T
 UB90.060.089.UL.2T
 UB90.060.089.050.2T
 UB90.060.089.050.UL.2T

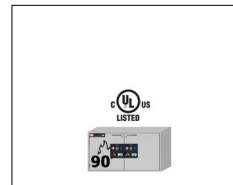


UB90.060.059.T
 UB90.060.059.TR
 UB90.060.059.UL.T
 UB90.060.059.UL.TR
 UB90.060.059.050.T
 UB90.060.059.050.TR
 UB90.060.059.050.UL.T
 UB90.060.059.050.UL.TR
 UB90.080.059.060.T
 UB90.080.059.060.TR

UB-ST-90

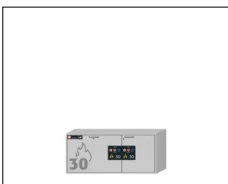


UB90.060.140.S2T
 UB90.060.140.UL.S2T
 UB90.060.140.050.S2T
 UB90.060.140.050.UL.S2T



UB90.060.110.ST
 UB90.060.110.UL.ST
 UB90.060.110.050.ST
 UB90.060.110.050.UL.ST

UB-S-30



UB30.060.140.2S



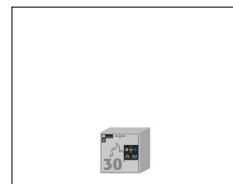
UB30.060.110.S



UB30.060.110.2S

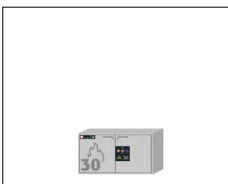


UB30.060.089.S



UB30.060.059.S

UB-T-30

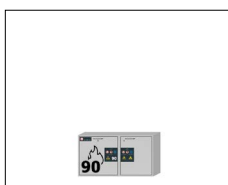


UB30.060.110.2T

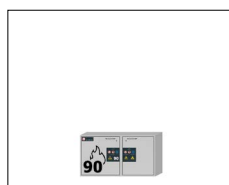


UB30.060.059.T

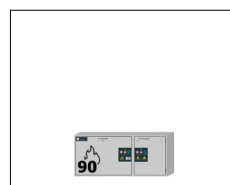
K-UB-90



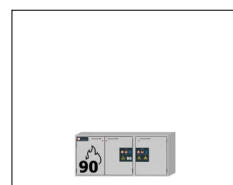
K90.060.110.050.UB.ST



K90.060.110.050.UB.2T



K90.060.140.050.UB.ST



K90.060.140.050.UB.3T



asecos GmbH
Customer service
Weierfeldsiedlung 16–18
D-63584 Gründau

Fax: +49 60 51 - 92 20-10
email: service asecos.com

YOUR PERSONAL DOCUMENTATION TO THE asecos SAFETY CABINET

Dear Customer,

you have made a decisive investment in safety for your company by purchasing this asecos safety storage cabinet. You now own an innovative product made of top-quality materials guaranteeing the highest quality standards.

asecos safety storage cabinets have complete authorisation documents. We archive the authorisation documents for every individual cabinet, keeping them ready for you should you ever need them (e.g. for a works inspection or similar). Simply request them using this form.

Tear of or copy that page and return to us by fax with your address and serial number of the cabinet on it.

Yours sincerely
asecos GmbH

Contact

Company		
<input type="text"/>		
Street	Postal code	Town
<input type="text"/>	<input type="text"/>	<input type="text"/>
Name of contact person		
<input type="text"/>		
email	Phone No.	
<input type="text"/>	<input type="text"/>	
Serial numbers of safety storage cabinets		
<input type="text"/>	<input type="text"/>	<input type="text"/>
<input type="text"/>	<input type="text"/>	<input type="text"/>
<input type="text"/>	<input type="text"/>	<input type="text"/>
<input type="text"/>	<input type="text"/>	<input type="text"/>

OPERATING INSTRUCTIONS

Dear customer,

Thank you very much for purchasing a safety storage cabinet from our company, with which you have made a decisive investment in the safety within your company. Our safety storage cabinets make the storage of hazardous materials at the workplace safe and convenient for you.

Please read these operating instructions very carefully. Get to know the advantages and simple operability of our safety storage cabinets in detail. This simplifies the daily handling of hazardous materials for you.

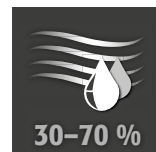
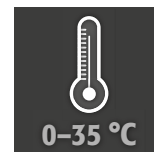
Many thanks
Your asecos team

1. NOTES ▪ GUIDELINES ▪ GUARANTEE	5
1.1. General safety notes	5
1.2. Guarantee	5
1.3. Cabinet Details	5
1.4. Marking and symbols on the cabinet	5
2. TRANSPORT	6
2.1. Tilting the cabinet	6
3. ERECTION ▪ COMMISSIONING ▪ FUNCTION	6
3.1. Alignment Of The Cabinets	6
3.2. Mobile plinth	7
3.3. Commissioning	7
3.4. Anti-Tilt Device	7
4. CLOSING MECHANISMS	8
4.1. Types Of Closing	8
4.2. Locking	8
5. INTERIOR FITTINGS	8
5.1. Bottom collecting sump / drawer	8
5.2. Shelves (models with wing door)	9
5.3. Drawers (models with wing door)	9
5.4. Second level drawer (models with drawers)	9
5.5. Pull-out shelves (Models K-LINE)	10
5.6. Leaks	10
6. STORAGE	11
6.1. Models UB-LINE	11
6.2. Models K-UB-90	11
7. EARTHING	11
7.1. Grounding PREMIUM	12
7.2. Grounding the interior	12
8. VENTILATION	12
8.1. General facts	12
8.2. Connection to technical ventilation	12
9. FIRE ▪ DISPOSAL	13
9.1. Opening the cabinet after the fire	13
9.2. Disposal	13
10. SAFETY CHECKS	13
10.1. In general	13
10.2. Wearing parts	13
11. TECHNICAL DRAWING	14
12. TECHNICAL DATA	15
12.1. Table with technical data	15
12.2. Table with storage capacities	16

1.1. GENERAL SAFETY NOTES

- Observe applicable statutes and regulations, and the notes in these operating instructions, when handling hazardous materials
- Work on the electrical system is to be carried out only with the power turned off and only by qualified electricians – refer here to the regulations of the local electricity supply company.
- The on-site installation conditions are to be observed (e.g. bolting the cabinets to the building).
- The instructions of the supervisory engineering department must be followed.
- Observe accident prevention regulations and workplace ordinance
- **Ensure that the necessary safety checks are only carried out by authorised staff using original spare parts**
- Only use the cabinet after having been properly instructed; access is to be forbidden to unauthorised persons.
- The pivoting area of the doors is to be kept free at all times; doors/drawers are to be kept closed
- By assigning trained/authorised technical personnel you can prevent the malfunctions, damage and corrosion damage that result from inappropriate transport.
- Observe the upper limits for stored quantities, loading etc.
- Containers with a volume larger than that of the bottom collecting sump may not be placed inside the cabinet; spilt hazardous materials are to be collected immediately and removed
- Before storing such materials, check that the cabinet's surface is resistant to the chemicals.
- Vessels containing aggressive chemicals (acids and alkalis) are to be kept in special cabinets for acids and alkalis or on shelves for acids and alkalis
- Before the initial commissioning, the safety storage cabinet is to be examined by the user for possible damage.
- To avoid explosive atmospheres and harmful vapours, sufficient technical ventilation is strongly recommended. Please observe the instructions for connection to an exhaust air system.

Set-up requirements



1.2. GUARANTEE

The guarantee for this product is agreed between you (the customer) and your dealer (the seller). As the manufacturer, asecos guarantees the products listed in the operating instructions for a period of 24 months from the date of delivery. All model safety equipment are subject to a compulsory annual inspection by specialised staff authorised by the manufacturer. Otherwise the customer's guarantee claim against the manufacturer expires. Please note that the warranty is also void if holes are drilled or modifications are made without consulting the manufacturer asecos.

1.3. CABINET DETAILS

A complete overview of the models can be found at the start of the operating instructions.

Cabinet data: logbook (included with the cabinet)
Technical drawing: see appendix
Technical data: table in appendix

UB-LINE

These models are tested, certified and marked according to requirements of BS EN 14470-1.

- Models UB30: fire resistance 30 minutes
- Models UB90: fire resistance 90 minutes
- Models UB90 with UL sign: additionally tested, certified and marked according to the requirements of UL(C) 1275.

All cabinets are used for a safe, passive storage of flammable liquids in working rooms in accordance with applicable national requirements.

K-UB-LINE

The left compartments of the cabinets are used for a safe, passive storage of flammable liquids in working rooms in accordance with applicable national regulations and are tested, certified and marked according to the requirements of EN 14470-1. The right compartments of the cabinets are used for a separate storage of aggressive, non-flammable hazardous substances (e.g. acids and alkalis)

1.4. MARKING AND SYMBOLS ON THE CABINET

Various stickers with different symbols are attached to the cabinet. An explanation of the individual symbols and illustrations is provided below.



1 Prohibition sign: No open flame



2 Mandatory sign: Refer to instruction manual/booklet

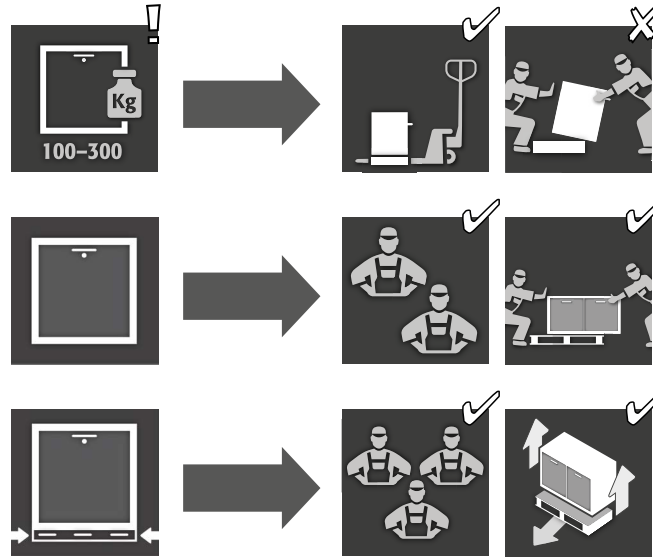


3 Mandatory sign: Keep doors closed



4 Recommendation: Connection to a technical ventilation system is recommended.

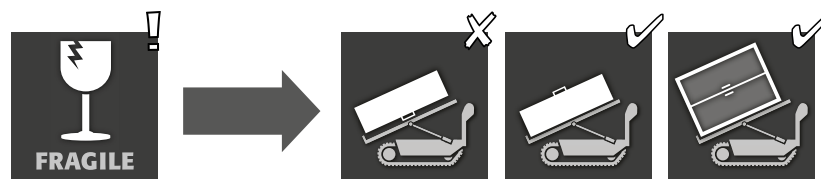
2. TRANSPORT



CAUTION:

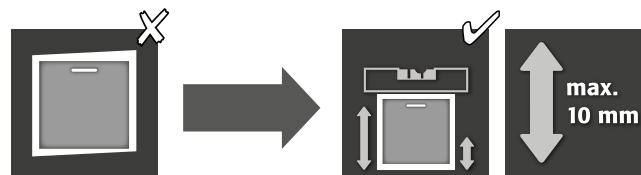
Transport the cabinet in an upright position on a pallet truck, tied and secured against slipping, until the final place of installation is reached. The transport locks in the door joints may only be removed directly at the place of installation! Inappropriate transport can lead to concealed damage to the fire protection insulation! We can only guarantee the necessary quality if the cabinet is transported to the place of its use by our specially trained staff.

2.1. TILTING THE CABINET



3. ERECTION - COMMISSIONING - FUNCTION

3.1. ALIGNMENT OF THE CABINETS

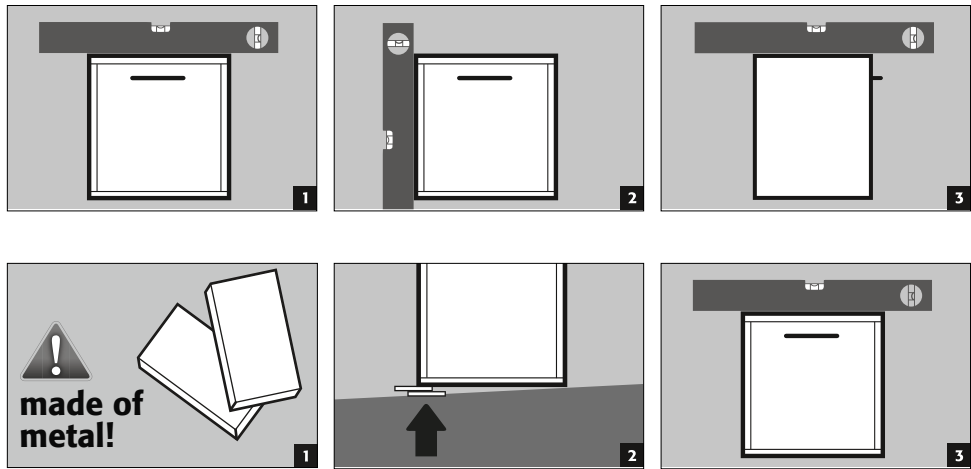


NOTE

If the distance between door/drawer and floor is greater than 40 mm and less than 120 mm, appropriate door panels can be used to avoid possible crushing hazards in the foot area. The matching panels for the cabinet model can be requested free of charge at service@asecos.com.



CAUTION:
Door and drawer elements must not rub against the fire protection seals in the door and drawer rebate when opening and closing!

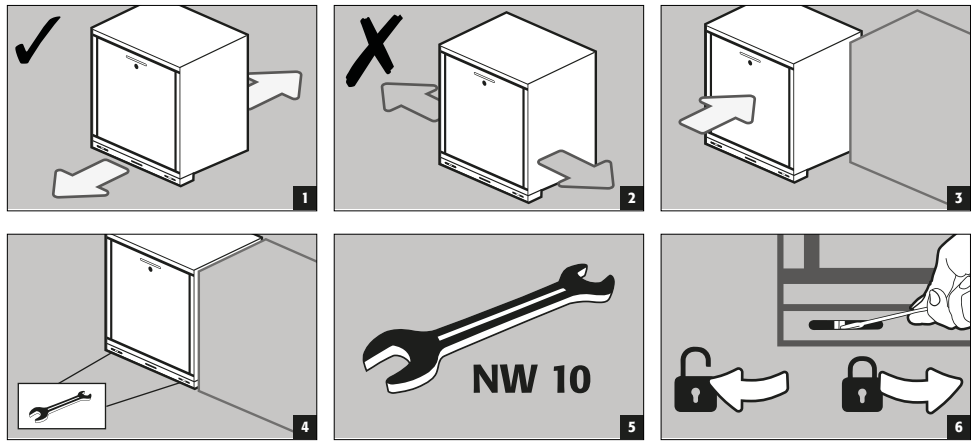


CAUTION:
For models with a mobile plinth, this must be locked in advance. Only then can the cabinets be aligned.

3.2. MOBILE PLINTH



NOTE
If the distance between door/drawer and floor is greater than 40 mm and less than 120 mm, appropriate door panels can be used to avoid possible crushing hazards in the foot area. The matching panels for the cabinet model can be requested free of charge at service@asecos.com.



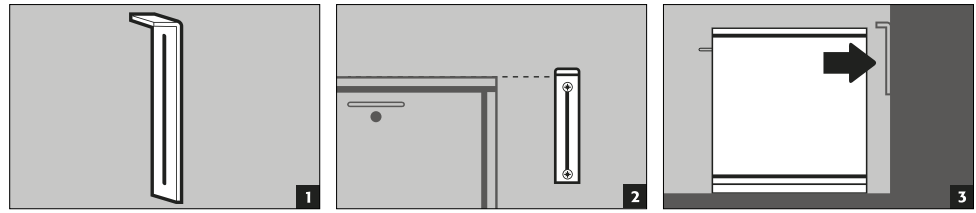
3.3. COMMISSIONING

- Before putting into operation for the first time, the user must carry out an examination of the safety storage cabinet for possible damage, such as defective or loose sealing elements, correct alignment and perfect functioning of the door elements.
Use the cabinet and accessories only if they are in an orderly condition.

3.4. ANTI-TILT DEVICE

Anti-tilt bracket (EP.ML.6323): Optional to prevent tilting with maximum load and fully extended

drawers



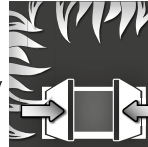
4. CLOSING MECHANISMS

4.1. TYPES OF CLOSING

UB-LINE



Standard operation:
doors/drawers must be opened and closed manually

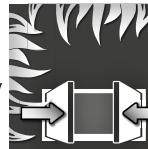


Event of fire: Thermal release, open doors/drawers close automatically

K-UB-90



Standard operation:
drawers/doors must be opened and closed manually (all compartments)



Event of fire: Thermal release, open doors/drawers close automatically (storage compartment for flammable liquids)



CAUTION:

If the doors/drawers of the compartment for flammable liquids not longer latch in any position, then the fusible link of the thermal release has tripped. The cabinet is to be returned to its delivery condition immediately in order to avoid malfunctions.

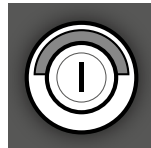
4.2. LOCKING



CAUTION:

Applicable for all models: The owner/user must ensure that all doors and drawers are kept closed whenever the contents of the cabinet are not being accessed! In general it must be noted that the cabinets do not possess an emergency unlocking facility. This means that persons trapped inside the cabinet cannot free themselves!

All models



Cylinder lock
with locking state indicator

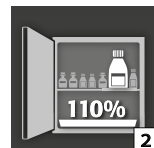
5. INTERIOR FITTINGS



CAUTION:

Loose parts (e.g. insertable sumps) must always be fully installed/inserted in order to ensure secure closing of the cabinet doors in case of fire.

5.1. BOTTOM COLLECTING SUMP / DRAWER





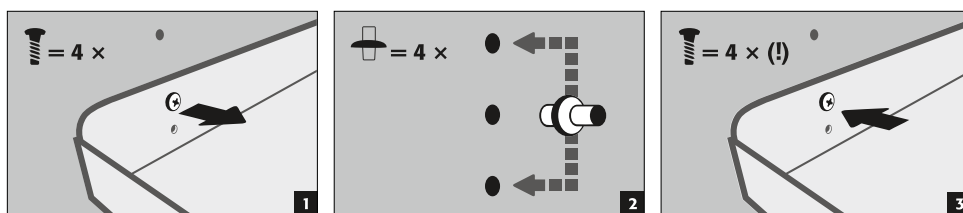
In accordance with EN 14470-1:2023-09 (point 5.7):
 A bottom collecting sump/drawer tray must be installed below the lowest centre level. The bottom collecting sump/drawer tray must have a minimum collection volume of 10 % of all containers stored in the cabinet [1], or at least 110 % of the volume of the largest individual container [2], whichever is greater.

In principle, the bottom collecting sump/drawer tray must not be used as a storage surface. If the bottom collecting sump/drawer tray is used directly as a storage area and is therefore also the lowest storage level, the user must ensure that the minimum collection volume of all stored containers or the volume of the largest container is guaranteed.

The information on the type plate of the safety storage cabinet regarding the collection volume and the max. largest container represent the values if the bottom collecting sump/drawer tray is not used as a storage surface.

5.2. SHELVES (MODELS WITH WING DOOR)

- additional storage level inside the cabinet
- is installed in a fixed position in the cabinet
- is fixed on the side walls to prevent it from tipping over and being pulled out

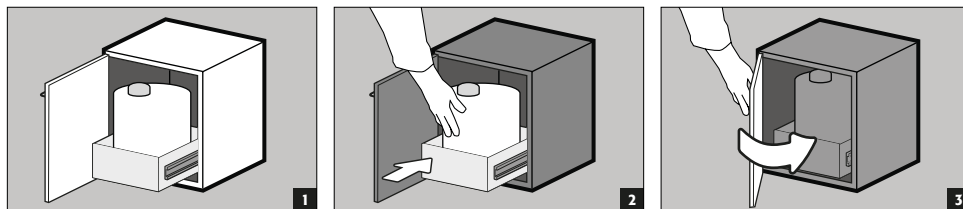


5.3. DRAWERS (MODELS WITH WING DOOR)

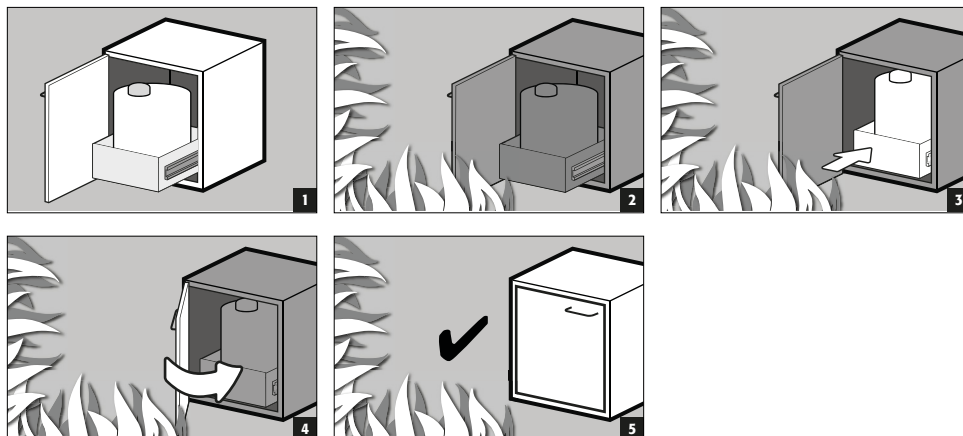
For storage of large containers up to 30 liters with a maximized setting height in the cabinet

- **Standard operation:** pull out and push in drawer manually
- **Event of fire:** thermal release, pulled out drawer is automatically drawn into the cabinet

Normal operation



Event of fire

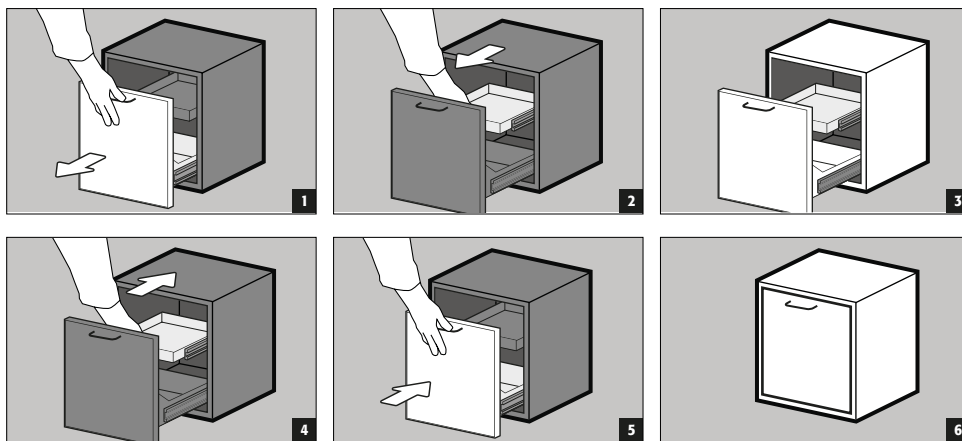


5.4. SECOND LEVEL DRAWER (MODELS WITH DRAWERS)

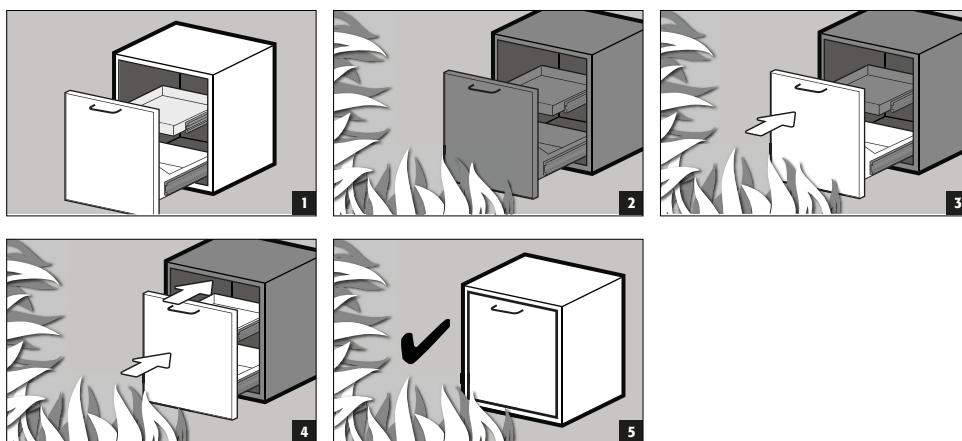
For storage of containers with maximum height of 230 mm

- **Standard operation:** pull out and push in second level drawer manually
- **Event of fire:** thermal release, the second level drawer that is pulled out, is automatically drawn into the cabinet when the drawer closes itself

Normal operation



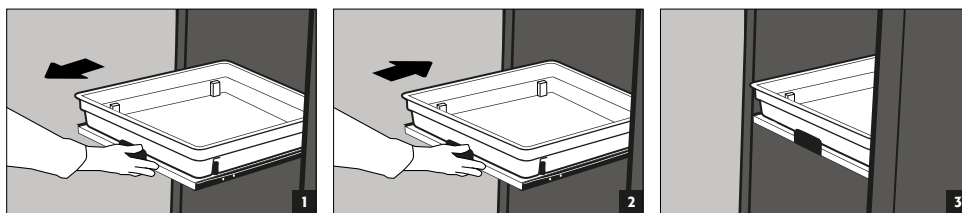
Event of fire



5.5. PULL-OUT SHELVES (MODELS K-LINE)

Right compartment (for inflammable hazardous materials – acids and bases)

- Pull-out shelves are permanently installed in the cabinet and have a pull-out protection.
- They have to be pushed into the cabinet by hand after use.
- Cabinets with pull-out shelves must be attached to the wall using an anti-tilt device (see 3.2)!



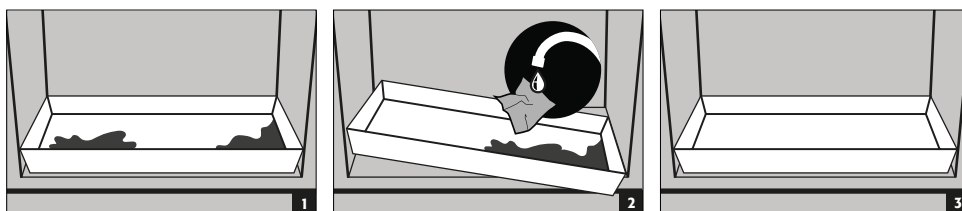
5.6. LEAKS



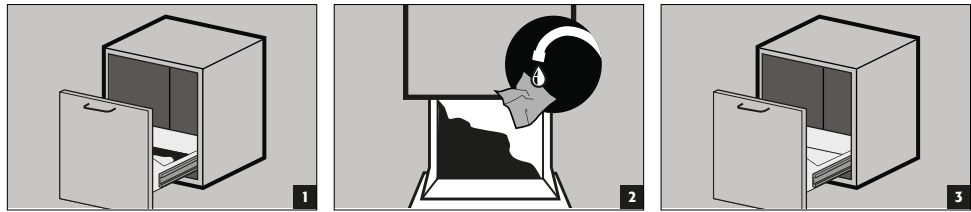
PLEASE NOTE

Liquid in the bottom collecting sump / drawer and in the sump of pull-out tray, must be taken up immediately and using suitable means. The choice of the means is your own responsibility, depending on the leaked chemical.

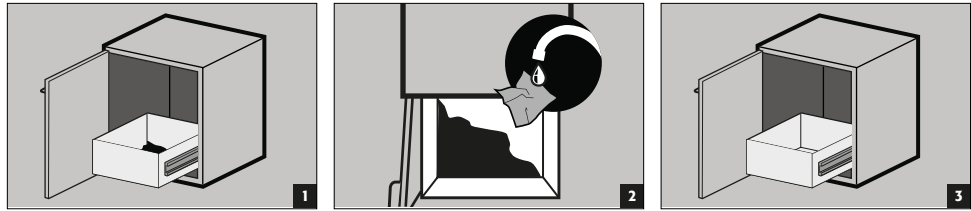
bottom collecting sump



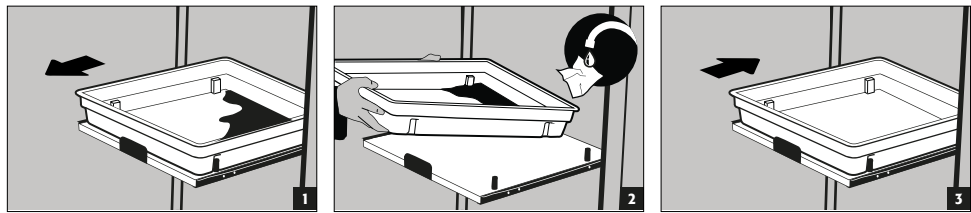
drawer



drawer behind door



pull-out shelf with sump



6. STORAGE



Applicable for all models: Depending on the type class of the cabinet, observe the respective valid national regulations!

6.1. MODELS UB-LINE

For passive storage of flammable liquids in work rooms (see point 1.3)

- Vessels containing aggressive chemicals (acids/alkalis) are to be kept in special cabinets for acids and alkalis or on shelves for acids and alkalis.



CAUTION:

Stored corrosive liquids can impair the function
 – of the shut-off devices for the supply and exhaust air
 – of self-closing in the event of fire

6.2. MODELS K-UB-90

- **Left compartments** for passive storage of flammable liquids in workrooms.
- **Right compartments** for passive storage of non-flammable, aggressive chemicals (e.g. acids and alkalis)



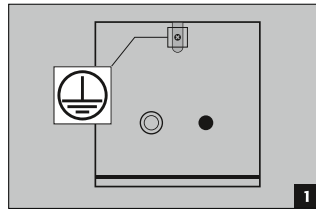
CAUTION:

Corrosive liquids stored in the left compartment affect the function of
 – the shut-off devices for the supply and exhaust air
 – of self-closing in the event of fire

7. EARTHING



An earth connection may be necessary, depending on the customer-specific use of the safety storage cabinet. The decision regarding this is taken on the basis of a risk analysis by the customer.



The UB-LINE and K-UB-90 models have an earth connection on the rear wall. The body panels are connected to one another in a metallically conductive manner via the earth connection. The earth connection is prepared for the creation of the on-site equipotential bonding.

7.1. GROUNDING PREMIUM

Only available in combination with cabinet for factory assembly.

Optionally, the wardrobes are equipped as follows at an extra charge:

- Additional metallic conductive connection of the doors (drawers), door handles and baseboard to the cabinet body
- UB-LINE / K-UB-90 models with wing door(s): Article 39793 (HFE.34360)
- UB-LINE / K-UB-90 models with drawer(s): Article 39796 (HFE.34367)

7.2. GROUNDING THE INTERIOR

Optionally, the enclosures can be equipped with a

- earthing cable (L=1100 mm) incl. terminal - article 31710 (HFE.12704) or
- earthing cable (L=1100 mm) incl. pole terminal - Article 39148 (HFE.33673).

The earthing cable is connected inside at the earthing connection on the rear wall of the cabinet.

8. VENTILATION



CAUTION

The fire protection valves near the supply and extraction air connections are safety and maintenance-relevant components.

In order to check the correct operation or to replace a defective element, please ensure that flexible connecting hoses or sliding pieces are used to connect to an extraction system in order to ensure simple dismantling and re-mounting of the extraction air connection.

8.1. GENERAL FACTS

- If installed on an exhaust system, a check must be carried out to ensure proper connection to the system (e.g. using a smoke tube)

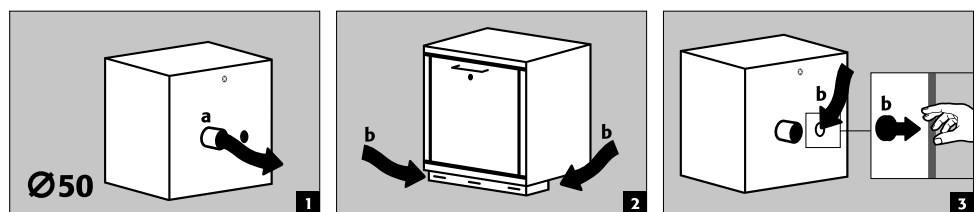
8.2. CONNECTION TO TECHNICAL VENTILATION



CAUTION:

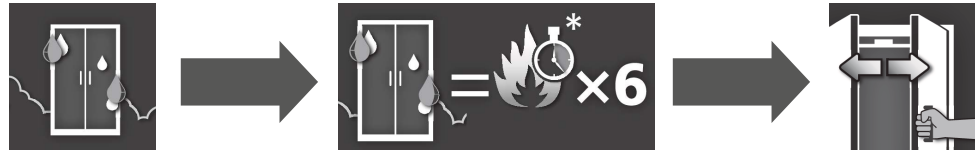
In general these models can be operated without technical ventilation. The direct environment of the cabinet can be an explosive zone in this case. If the cabinet is to be operated without an exhaust connection, the user must attach a marking to it. With some models the supply and exhaust connectors are not pre-mounted. They are included with the cabinet and **must be screwed** to the openings on the top section.

extraction air (a)
extraction air (b)
figure 2: cabinet with plinth
figure 3: cabinet without plinth



- All models can be connected to a technical exhaust system via the exhaust connector. Please see the respectively applicable national regulations for the specified air recirculation rate, maximum pressure losses and exhaust air ducts.

9.1. OPENING THE CABINET AFTER THE FIRE



ATTENTION:

Only authorised personnel (e.g. fire brigade) may open the cabinet!

Depending upon the duration of the fire an ignitable vapour/air mixture may have formed; therefore remove all sources of ignition within a 10 metre radius of the cabinet before opening it.

Use only spark-free tools !

Open the cabinets with extreme caution !

9.2. DISPOSAL



The models can be disposed of once they have been dismantled and the materials sorted.

10. SAFETY CHECKS

10.1. IN GENERAL

As safety equipment the cabinets have to be checked for safety at least once per year. The next checking date can be taken from the service sticker on the outside of the door. This annual check can be carried out with the necessary care, and for securing your warranty claims in the case of fire, only by an authorised asecos employee (refer also to our service brochure regarding this).

In addition, we recommend that you carry out a daily and monthly functional check:

Daily functional check

- applies to the spill containment sumps (collect and remove any leakages)

Monthly functional check

- perfect function of the doors:
 - hinges
 - locking system
 - door closer
 - door open arrest system
- correct seating and condition of the fire protection seals

Case of damage

In case of damage please contact your dealer in order to have the cabinet repaired using original spare parts. The cabinets can be cleaned with a mild household cleaner and a soft cloth.

10.2. WEARING PARTS

Various safety-related components of the safety storage cabinet are wearing parts and must be replaced at regular intervals by asecos Service. A list of the parts affected for your safety cabinet is available on request from service@asecos.com.



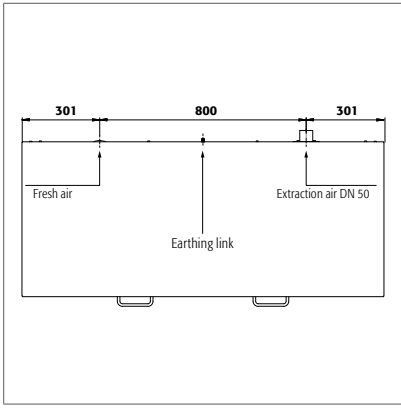
CONTACT:

In the case of defects or complaints about our products (within and also after the warranty period), and for requesting safety checks or taking out a service contract, please contact our service hotline on:

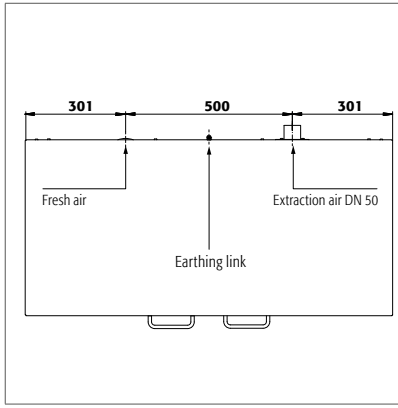
Tel: +44 1785 22 70-90 | info@asecos.co.uk (for great Britain and Ireland)

Tel: +49 1805 92 20 92 | service@asecos.com (international)

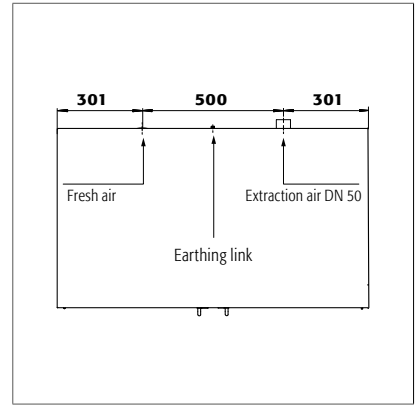
11. TECHNICAL DRAWING



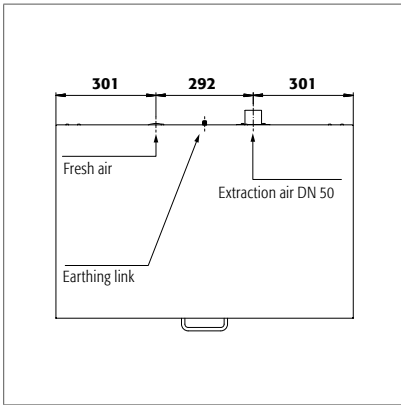
UB90.060.140.2S
 UB90.060.140.050.2S
 UB90.060.140.S2T
 UB90.060.140.050.S2T
 UB30.060.140.2S
 UB90.060.140.UL.2S
 UB90.060.140.050.UL.2S
 UB90.060.140.UL.S2T
 UB90.060.140.050.UL.S2T



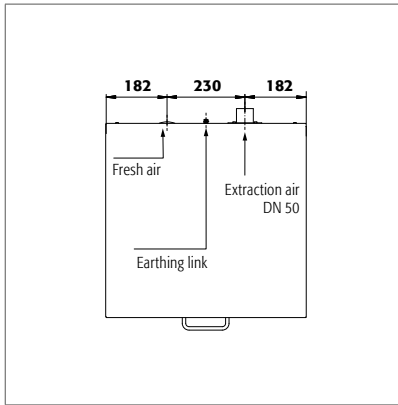
UB90.060.110.2S
 UB90.060.110.050.2S
 UB90.060.110.S
 UB90.060.110.050.S
 UB90.060.110.2T
 UB90.060.110.050.2T
 UB90.060.110.ST
 UB90.060.110.050.ST
 UB30.060.110.S
 UB30.060.110.2S
 UB90.080.110.060.2S
 UB90.060.110.UL.2S
 UB90.060.110.050.UL.2S
 UB90.060.110.UL.S
 UB90.060.110.050.UL.S
 UB90.060.110.UL.2T
 UB90.060.110.050.UL.2T
 UB90.060.110.UL.ST
 UB90.060.110.050.UL.ST
 UB30.060.110.2T
 UB90.080.110.060.2T
 UB90.080.110.050.2T



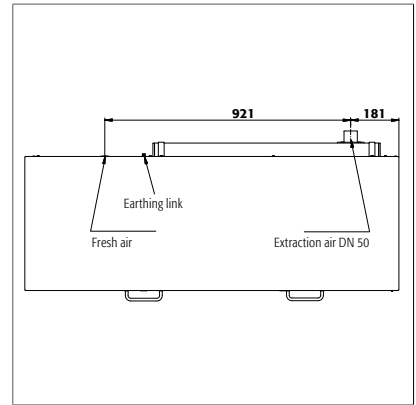
UB90.080.110.075.2T



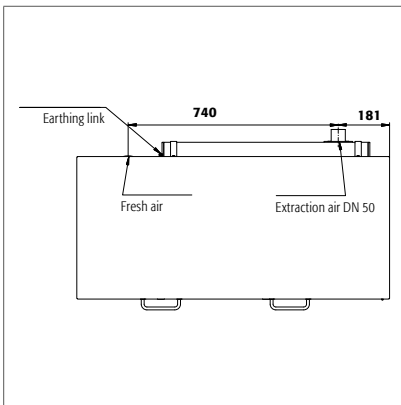
UB90.060.089.S
 UB90.060.089.050.S
 UB90.060.089.2T
 UB90.060.089.050.2T
 UB30.060.089.S
 UB90.060.089.UL.S
 UB90.060.089.050.UL.S
 UB90.060.089.UL.2T
 UB90.060.089.050.UL.2T



UB90.060.059.S
 UB90.060.059.050.S
 UB90.060.059.T
 UB90.060.059.UL.T
 UB90.060.059.050.T
 UB90.060.059.050.UL.T
 UB30.060.059.T
 UB90.080.059.060.T
 UB90.080.059.060.S
 UB90.060.059.UL.S
 UB90.060.059.050.UL.S
 UB90.060.059.TR
 UB90.060.059.UL.TR
 UB90.060.059.050.TR
 UB90.060.059.050.UL.TR
 UB30.060.059.S
 UB90.080.059.060.TR



K90.060.140.050.UB.ST
 K90.060.140.050.UB.3T



K90.060.110.050.UB.ST
 K90.060.110.050.UB.2T

12.1. TABLE WITH TECHNICAL DATA

The surface load is calculated by dividing the total weight of the cabinet (empty cabinet plus load) by its loading area. This is calculated by multiplying the width of the cabinet by the depth (sum of the depth of the cabinet and 1000 mm of space in front of it). The specification of the surface load in the operating instructions is a theoretical value, as the specification of the load represents the maximum permissible value for the cabinet construction. The calculation of the individual surface load must always be based on the actual load (weight of the interior fittings and weight of the stored containers).

EXAMPLE of the theoretical surface load calculation model UB90.060.110.2T:

Weight of cabinet	180 kg
Load:	300 kg
Working area:	1100 mm × (574+1000) mm
Calculation:	$\frac{180+300 \text{ kg}}{1,1 \text{ m} \times 1,574 \text{ m}} = \frac{480 \text{ kg}}{1,731 \text{ m}^2} = 277 \text{ kg/m}^2$

Key for "Technical data" table

- | | |
|---------------------------------|--|
| 1 Dimensions W x D x H external | 5 Maximum load (kg) |
| 2 Internal dimensions W x D x H | 6 Distributed load (kg/m ²) |
| 3 type | 7 Volume with 10 times air change (m ³ /h) |
| 4 Weight of empty cabinet(kg) | 8 Differential pressure (10 times air change EK5/AK4) (Pa) |

UB-LINE								
Technical data	1	2	3	4	5	6	7	8
UB90.060.140.2S	1402 x 574 x 600	1279 x 452 x 502	90	230	300	240	3	1
UB90.060.140.U.L.2S	1402 x 574 x 600	1279 x 452 x 502	90	230	300	240	3	1
UB90.060.140.050.2S	1402 x 502 x 600	1279 x 382 x 502	90	205	300	240	3	1
UB90.060.140.050.U.L.2S	1402 x 502 x 600	1279 x 382 x 502	90	205	300	240	3	1
UB90.060.140.S.2T	1402 x 574 x 600	1279 x 452 x 502	90	230	300	240	3	1
UB90.060.140.U.L.S.2T	1402 x 574 x 600	1279 x 452 x 502	90	230	300	240	3	1
UB90.060.140.050.S.2T	1402 x 502 x 600	1279 x 382 x 502	90	205	300	240	3	1
UB90.060.140.050.U.L.S.2T	1402 x 502 x 600	1279 x 382 x 502	90	205	300	240	3	1
UB90.060.110.2S	1102 x 574 x 600	979 x 452 x 502	90	180	300	277	2	1
UB90.060.110.U.L.2S	1102 x 574 x 600	979 x 452 x 502	90	180	300	277	2	1
UB90.060.110.050.2S	1102 x 502 x 600	979 x 382 x 502	90	160	300	278	2	1
UB90.060.110.050.U.L.2S	1102 x 502 x 600	979 x 382 x 502	90	160	300	278	2	1
UB90.060.110.S	1102 x 574 x 600	979 x 452 x 502	90	180	300	277	2	1
UB90.060.110.U.L.S	1102 x 574 x 600	979 x 452 x 502	90	180	300	277	2	1
UB90.060.110.050.S	1102 x 502 x 600	979 x 382 x 502	90	160	300	278	2	1
UB90.060.110.050.U.L.S	1102 x 502 x 600	979 x 382 x 502	90	160	300	278	2	1
UB90.060.110.2T	1102 x 574 x 600	979 x 452 x 502	90	180	300	277	2	1
UB90.060.110.U.L.2T	1102 x 574 x 600	979 x 452 x 502	90	180	300	277	2	1
UB90.060.110.050.2T	1102 x 502 x 600	979 x 382 x 502	90	160	300	278	2	1
UB90.060.110.050.U.L.2T	1102 x 502 x 600	979 x 382 x 502	90	160	300	278	2	1
UB90.060.110.ST	1102 x 574 x 600	979 x 452 x 502	90	180	300	277	2	1
UB90.060.110.U.L.ST	1102 x 574 x 600	979 x 452 x 502	90	180	300	277	2	1
UB90.060.110.050.ST	1102 x 502 x 600	979 x 382 x 502	90	160	300	278	2	1
UB90.060.110.050.U.L.ST	1102 x 502 x 600	979 x 382 x 502	90	160	300	278	2	1
UB90.060.089.S	893 x 574 x 600	771 x 452 x 502	90	140	300	313	2	1
UB90.060.089.U.L.S	893 x 574 x 600	771 x 452 x 502	90	140	300	313	1	1
UB90.060.089.050.S	893 x 502 x 600	771 x 382 x 502	90	125	300	317	1	1
UB90.060.089.050.U.L.S	893 x 502 x 600	771 x 382 x 502	90	125	300	317	1	1
UB90.060.089.2T	893 x 574 x 600	771 x 452 x 502	90	140	300	313	2	1
UB90.060.089.U.L.2T	893 x 574 x 600	771 x 452 x 502	90	140	300	313	1	1
UB90.060.089.050.2T	893 x 502 x 600	771 x 382 x 502	90	125	300	317	1	1
UB90.060.089.050.U.L.2T	893 x 502 x 600	771 x 382 x 502	90	125	300	317	1	1
UB90.060.059.S	593 x 574 x 600	470 x 452 x 502	90	120	300	450	1	1
UB90.060.059.U.L.S	593 x 574 x 600	470 x 452 x 502	90	120	300	450	1	1
UB90.060.059.050.S	593 x 502 x 600	470 x 382 x 502	90	110	300	460	1	1
UB90.060.059.050.U.L.S	593 x 502 x 600	470 x 382 x 502	90	110	300	460	1	1
UB90.060.059.T	593 x 574 x 600	470 x 452 x 502	90	120	300	450	1	1
UB90.060.059.TR	593 x 574 x 600	470 x 452 x 502	90	120	300	450	1	1
UB90.060.059.U.L.T	593 x 574 x 600	470 x 452 x 502	90	120	300	450	1	1
UB90.060.059.U.L.TR	593 x 574 x 600	470 x 452 x 502	90	120	300	450	1	1
UB90.060.059.050.T	593 x 502 x 600	470 x 382 x 502	90	110	300	460	1	1

UB-LINE								
Technical data	1	2	3	4	5	6	7	8
UB90.060.059.050.TR	593 x 502 x 600	470 x 382 x 502	90	110	300	460	1	1
UB90.060.059.050.U.L.T	593 x 502 x 600	470 x 382 x 502	90	110	300	460	1	1
UB90.060.059.050.U.L.TR	593 x 502 x 600	470 x 382 x 502	90	110	300	460	1	1
UB30.060.140.2S	1402 x 574 x 600	1279 x 452 x 502	30	230	300	240	3	1
UB30.060.110.5	1102 x 574 x 600	979 x 452 x 502	30	180	300	277	2	1
UB30.060.110.2T	1102 x 574 x 600	979 x 452 x 502	30	120	300	277	2	1
UB30.060.110.2S	1102 x 574 x 600	979 x 452 x 502	30	180	300	277	2	1
UB30.060.089.5	893 x 574 x 600	771 x 452 x 502	30	140	300	313	2	1
UB30.060.059.T	593 x 574 x 600	470 x 452 x 502	30	120	300	450	1	1
UB30.060.059.S	593 x 574 x 600	470 x 452 x 502	30	120	300	450	1	1
UB90.080.110.060.2T	1102 x 600 x 800	979 x 482 x 702	90	233	300	302	2	1
UB90.080.110.060.2S	1102 x 600 x 800	979 x 482 x 702	90	233	300	302	2	1
UB90.080.110.050.2T	1102 x 502 x 800	979 x 382 x 702	90	185	300	302	2	1
UB90.080.110.075.2T	1102 x 752 x 800	979 x 626 x 701	90	200	300	259	4	5
UB90.080.059.060.T	593 x 600 x 800	470 x 482 x 702	90	143	300	467	2	1
UB90.080.059.060.TR	593 x 600 x 800	470 x 482 x 702	90	143	300	467	2	1
UB90.080.059.060.S	593 x 600 x 800	470 x 482 x 702	90	143	300	467	2	1

K-LINE								
Technical data	1	2	3	4	5	6	7	8
K90.060.110.050.U.B.ST	1102 x 502 x 601	left: 470 x 380 x 502 right: 440 x 468 x 562	90 Left compartment	155	300	275	2	1
K90.060.110.050.U.B.2T	1102 x 502 x 601	left: 470 x 380 x 502 right: 440 x 468 x 562	90 Left compartment	155	300	275	2	1
K90.060.140.050.U.B.ST	1402 x 502 x 601	left: 770 x 380 x 502 right: 440 x 468 x 562	90 Left compartment	197	300	236	3	1
K90.060.140.050.U.B.3T	1402 x 502 x 601	left: 770 x 380 x 502 right: 440 x 468 x 562	90 Left compartment	197	300	236	3	1

12.2. TABLE WITH STORAGE CAPACITIES

Legend for "Storage capacities" table



Load capacity (kg) of storage levels









Retention capacity (ltr.)



Maximum container volume in the cabinet (ltr.)

UB-LINE																												
Interior equipment	1 shelf							4 drawer							7 drawer													
	2 perforated insert							5 Drawer (disposal)																				
	3 bottom collecting sump							6 Second level drawer																				
	1	2	3	4	5	6	7	1	2	3	4	5	6	7	1	2	3	4	5	6	7	1	2	3	4	5	6	7
UB90.060.140.2S		75				25	50							3/5,5	11,5/20/21											2,5/5	10/18/19	
UB90.060.140.U.L.2S		75				25	50							3/5,5	11,5/20/21											2,5/5	10/18/19	
UB90.060.140.050.2S		75				25	50							2,5/4,5	10/17,5											2/4	9/15,5	
UB90.060.140.050.U.L.2S		75				25	50							2,5/4,5	10/17,5											2/4	9/15,5	
UB90.060.140.050.U.L.2T	30	75				25	50			20/22				3	11,5										18/20	2,5	10	
UB90.060.140.U.L.S.2T	30	75				25	50			20/22				3	11,5									18/20	2,5	10		
UB90.060.140.050.U.L.S.2T	30	75				25	50			11/16,5				2,5	10									10/15	2	9		
UB90.060.140.050.U.L.S.2T	30	75				25	50			11/16,5				2,5	10									10/15	2	9		
UB90.060.110.2S		75				25	50							3	11,5											2,5	10	
UB90.060.110.U.L.2S		75				25	50							3	11,5											2,5	10	
UB90.060.110.050.2S		75				25	50							2,5	10											2	9	
UB90.060.110.050.U.L.2S		75				25	50							2,5	10											2	9	
UB90.060.110.5		75				25	50							7	26/27											6	23/24,5	
UB90.060.110.U.L.S		75				25	50							7	26/27											6	23/24,5	
UB90.060.110.050.S		75				25	50							6	21,5/22,5											5	19,5/20	
UB90.060.110.050.U.L.S		75				25	50							6	21,5/22,5											5	19,5/20	
UB90.060.110.2T	30	75				50				22/25,5			15,5											20/23		14		
UB90.060.110.U.L.2T	30	75				50				22/25,5			15,5											20/23		14		
UB90.060.110.050.2T	30	75								21/22														19/20				
UB90.060.110.050.U.L.2T	30	75								21/22														19/20				
UB90.060.110.ST	30	75				25	50			11/12				3	11,5									10		2,5	10	
UB90.060.110.U.L.ST	30	75				25	50			11/12				3	11,5									10		2,5	10	

UB-LINE																				
Interior equipment		1 shelf					4 drawer					7 drawer								
		2 perforated insert					5 Drawer (disposal)													
		3 bottom collecting sump					6 Second level drawer													
																				
UB90.060.110.050.ST	30	75				25	50			10/11			2,5	10			10		2	9
UB90.060.110.050.UL.ST	30	75				25	50			10/11			2,5	10			10		2	9
UB90.060.089.S		75				25	50						5,5	20/21					5	18/19
UB90.060.089.U.L.S		75				25	50						5,5	20/21					5	18/19
UB90.060.089.050.S		75				25	50						4,5	16,5/17,5					4	15/15,5
UB90.060.089.050.U.L.S		75				25	50						4,5	16,5/17,5					4	15/15,5
UB90.060.089.2T	30	75		50						20/22	23						18/20	20,5		
UB90.060.089.U.L.2T	30	75		50						20/22	23						18/20	20,5		
UB90.060.089.050.2T	30	75								11/16,5							10/15			
UB90.060.089.050.U.L.2T	30	75								11/16,5							10/15			
UB90.060.059.S		75				25	50						3	11,5					2,5	10
UB90.060.059.U.L.S		75				25	50						3	11,5					2,5	10
UB90.060.059.050.S		75				25	50						2,5	10					2	9
UB90.060.059.050.U.L.S		75				25	50						2,5	10					2	9
UB90.060.059.T	30	75		50	50					11/12	12	15,5/30					10	10,5	14/27	
UB90.060.059.TR	30	75		50	50					11/12	12	15,5/30					10	10,5	14/27	
UB90.060.059.U.L.T	30	75		50	50					11/12	12	15,5/30					10	10,5	14/27	
UB90.060.059.U.L.TR	30	75		50	50					11/12	12	15,5/30					10	10,5	14/27	
UB90.060.059.050.T	30	75								10/11							9/10			
UB90.060.059.050.TR	30	75								10/11							9/10			
UB90.060.059.050.U.L.T	30	75								10/11							9/10			
UB90.060.059.050.U.L.TR	30	75								10/11							9/10			
UB30.060.140.2S		75				25	50						3/5,5	11,5/20/21					2,5/5	10/18/19
UB30.060.110.S		75				25	50						7	26/27					6	23/24,5
UB30.060.110.2T	30	75		50						22/25,5		15,5					20/23		14	
UB30.060.110.2S		75				25	50						3	11,5					2,5	10
UB30.060.089.S		75				25	50						5,5	20/21					5	18/19
UB30.060.059.T	30	75		50	50					11/12	12	15,5/30					10	10,5	14/27	
UB30.060.059.S		75				25	50						3	11,5					2,5	10
UB90.080.110.060.2T	30	75		50						22/25,5		15,5					20/23		14	
UB90.080.110.060.2S		75				25	50						3	25					2,5	22,5
UB90.080.110.050.2T	30	75								21/22							19/20			
UB90.080.110.075.2T		75		60						33	33						30	30		
UB90.080.059.060.T	30	75		50	50					11/12	12	15,5/30					10	10,5	14/27	
UB90.080.059.060.TR	30	75		50	50					11/12	12	15,5/30					10	10,5	14/27	
UB90.080.059.060.S		75				25	50						3	25					2,5	22,5

K-LINE																					
Interior equipment individual parts (left comp.)		1 shelf					2 perforated insert					3 bottom collecting sump									
		4 drawer																			
Interior equipment individual parts (right comp.)		5 pull-out shelf																			
																					
		1	2	3	4	5				1	2	3	4	5			1	2	3	4	5
K90.060.140.050.UB.3T		30	75			25				11/16,5			11						10/15		10
K90.060.140.050.UB.ST			75			50	25					20	11							18	10
K90.060.110.050.UB.2T		30	75			25				10/11			11						9/10		10
K90.060.110.050.UB.ST						50	25					20	11							18	10

